

# South San Luis Obispo County SANITATION DISTRICT

1600 Aloha Place  
Oceano, CA 93475  
(805) 489-6670



## Sewer System Management Plan



PREPARED BY:



**WALLACE GROUP®**

Revision 2—October 25, 2011

## List of Acronyms and Abbreviations

---

APCD	Air Pollution Control District
BMP	Best Management Practices
CAP	Capacity Assessment Plan
Cal EMA	California Emergency Management Agency (formerly State OES)
CCTV	Closed Circuit Television
CDFG	California Department of Fish and Game
CIP	Capital Improvement Plan
CIWQS	California Integrated Water Quality System
CWEA	California Water Environment Association
District	South San Luis Obispo County Sanitation District
EH	San Luis Obispo County Environmental Health Department
ELAP	Environmental Laboratory Accreditation Program
FOG	Fats, Oil, and Grease
FSE	Food Services Establishment
HMA	High Maintenance Area
I/I	Inflow & Infiltration
LRO	Legally Responsible Official
mgd	Million Gallons per Day
NOAA	National Oceanic and Atmospheric Administration
NPDES	National Pollutant Discharge Elimination System
OERP	Overflow Emergency Response Plan
OES	Office of Emergency Services (County)
O&M	Operation and Maintenance
PM	Preventative Maintenance
RWQCB	Regional Water Quality Control Board
SCADA	Supervisory Control and Data Acquisition
SHECAP	Sewer Hydraulic Evaluation and Capacity Assessment Plan
SSOR	Sewer System Overflow Report
SSMP	Sewer System Management Plan
SSLOCSD	South San Luis Obispo County Sanitation District
SSO	Sanitary Sewer Overflow
SWRCB	State Water Resources Control Board
WDR	Waste Discharge Requirements

## **Introduction**

---

This Sewer System Management Plan (SSMP) was developed in compliance with the requirements of the State Water Quality Control Board (SWQCB) Statewide General Waste Discharge Requirements (WDR), Orders No. 2006-0003-DWQ and WQ 2008-0002-EXEC.

### **0.1 Requirement Background**

The WDRs require all public wastewater collection system agencies in California that own and operate sanitary sewer systems greater than one mile in length, which collect or convey untreated or partially treated wastewater to a publicly owned treatment facility, to develop and implement a SSMP and report sanitary sewer overflows (SSOs) using the State's electronic reporting system, California Integrated Water Quality System (CIWQS).

The SSMP includes the following eleven elements:

1. Goals
2. Organization
3. Legal Authority
4. Operation and Maintenance Program
5. Design and Performance Provisions
6. Overflow Emergency Response Plan
7. Fats, Oil & Grease Control Program
8. System Evaluation and Capacity Assurance Plan
9. Monitoring, Measurement and Program Modifications
10. Sewer System Management Plan Program Audits
11. Communication Program

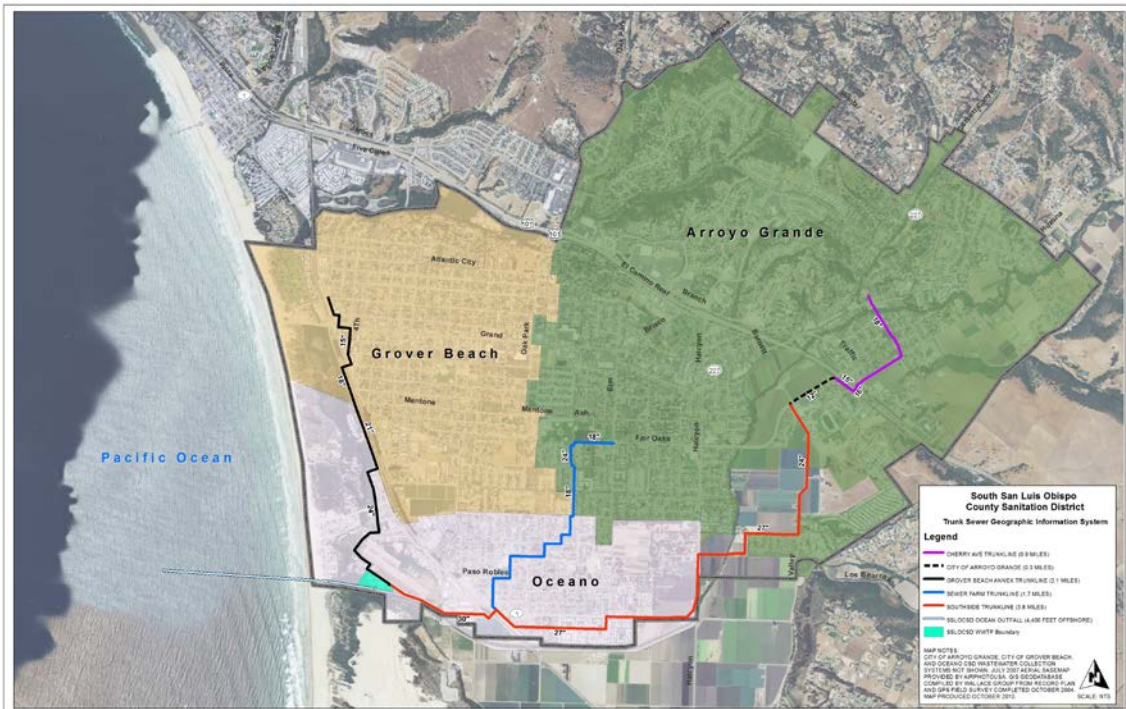
Each element is prefaced with the associated WDR section and narrated with the District's policies and procedures, which address the respective SWRCB requirement.

### **0.2 South San Luis Obispo County Sanitation District System Overview**

The San Luis Obispo County Board of Directors formed the South San Luis Obispo County Sanitation District (SSLOCSD or District) in 1963 to provide wastewater treatment to its neighboring communities. Upon formation, SSLOCSD included Arroyo Grande, the Communities of Oceano, Halcyon and several unincorporated areas in the vicinity. The City of Grover Beach was a contract agency.

By 1965, SSLOCSD completed the construction of the wastewater treatment plant (WWTP) on a 7.6 acre site located between the Oceano Airport and the Arroyo Grande Creek Channel on Aloha Place in Oceano.

Today, SSLOCSD operates the WWTP using a fixed film reactor for secondary treatment with a design capacity flow rate of 5 million gallons per day (mgd) and a 9 mgd peak wet weather flow. The SSLOCSD collection system is comprised of 8.5 miles of trunk sewers, which collect sewage from the District's Member Agencies (MAs): the City of Arroyo Grande, City of Grover Beach, and Oceano Community Services District (OCSD). The trunk lines range in diameter from 15-inches to 30-inches, and the collection system includes 155 manholes. Figure 0 – 1 illustrates SSLOCSD's trunk sewer and service area.



**Figure 0 - 1: SSLOCSD Trunk Sewer and Service Area**

The District collection system is comprised of 8.5 miles of trunk sewers, which collect sewage from Arroyo Grande, Grover Beach and Oceano. The sewer pipes range in size from 15” to 30”. The collection system includes 155 manholes.

It is incumbent upon the District to protect the environment to the greatest degree possible. The responsibility includes preventing SSOs from the District's trunk system.

### 0.3 Governing Body

The District is governed the Board of Directors, which is comprised of three members, who are annually appointed by their respective MAs. The Board of Directors makes policy and operational decisions with the District Administrator, District Engineer, and District Staff, who are responsible for the WWTP and District trunk system. The Board of Directors also establishes policy, sets goals and objectives, approves the annual budget,



and approves expenditures. The names of the current Board of Directors members are provided in SSMP Element 2: Organization.