

# **SOUTH SAN LUIS OBISPO COUNTY SANITATION DISTRICT**

Post Office Box 339 Oceano, California 93475-0339

1600 Aloha Oceano, California 93445-9735

Telephone (805) 489-6666 FAX (805) 489-2765

<http://sslocsd.org/>

## **Agenda**

### **Board of Directors Meeting**

1655 Front Street

Oceano, California 93445

**Wednesday, August 1, 2012 at 6:00 PM**

#### **Board Members**

Bill Nicolls, Chairman

Matthew Guerrero, Vice Chairman

Tony Ferrara, Director

#### **Alternates**

John Shoals, Director

Lori Angello, Director

Jim Guthrie, Director

#### **Agencies**

City of Grover Beach

Oceano Community Services District

City of Arroyo Grande

City of Grover Beach

Oceano Community Services District

City of Arroyo Grande

---

## **1. CALL TO ORDER AND ROLL CALL**

## **2. PUBLIC COMMENTS ON ITEMS NOT APPEARING ON AGENDA**

This public comment period is an invitation to members of the community to present comments, thoughts, or suggestions on matters not scheduled on this agenda. Comments should be limited to those matters that are within the jurisdiction of the District. The Brown Act restricts the Board from taking formal action on matters not published on the agenda. In response to your comments, the Chairman or presiding Board Member may:

- Direct staff to assist or coordinate with you.
- It may be the desire of the Board to place your issue or matter on a future Board agenda.

Please adhere to the following procedures when addressing the Board:

- Comments should be limited to 3 minutes or less.
- Your comments should be directed to the Board as a whole and not directed to individual Board members.
- Slanderous, profane or personal remarks against any Board Member, Staff or member of the audience shall not be permitted.

Any writing or document pertaining to an open session item on this agenda which is distributed to a majority of the Board after the posting of this agenda will be available for public inspection at the time the subject writing or document is distributed. The writing or document will be available for public review in the offices of the Oceano CSD a member agency. 1655 Front Street, Oceano, California. Consistent with the Americans with Disabilities Act and California Government Code §54954.2, requests for disability related modification or accommodation, including auxiliary aids or services may be made by a person with a disability who requires the modification or accommodation in order to participate at the above referenced public meeting by contacting the District Administrator or Administrative Assistant at 805-544-4011.

**3. CONSENT AGENDA**

The following routine items listed below are scheduled for consideration as a group. Each item is recommended for approval unless noted. Any member of the public who wishes to comment on any Consent Agenda item may do so at this time. Any Board Member may request that any item be withdrawn from the Consent Agenda to permit discussion or change the recommended course of action. The Board may approve the remainder of the Consent Agenda on one motion.

**3a. Review and Approval of Minutes of July 17, 2012 Special Meeting****3b. Review and Approval of Warrants****4. PLANT SUPERINTENDENT'S REPORT****5. BOARD ACTION ON INDIVIDUAL ITEMS:****A. LOADER TIRES PURCHASE**

Staff recommends the Board approve the purchase and installation of four tires for the District front loader in the amount of **\$3,746.43** from Big M Tire.

**B. CHART RECORDER PURCHASE**

Staff recommends the Board approve the purchase of Honeywell DR4500, two pen chart recorder with totalizer and 5 boxes of charts, from USA Bluebook not to exceed **\$2,668.73**.

**C. 40 HORSEPOWER ELECTRIC MOTOR PURCHASE**

Staff recommends the Board approve the purchase of a 40 horsepower electric motor from Perry's Electric Motors for **\$6,256.88**, plus freight.

**D. CASA ANNUAL CONFERENCE**

Staff recommends the Board consider attending the CASA conference scheduled for August 9, 2012 and direct staff if arrangements should be made.

**E. INFLUENT PUMP PARTS**

Staff recommends the Board approve the purchase of a stuffing box and Chesterton seal in the amount of \$7,456.54 from ABBA Pump Parts.

**6. PUBLIC COMMENT ON CLOSED SESSION****7. CLOSED SESSION**

- 1) Conference with Legal Counsel regarding existing litigation pursuant to Government Code Section 54956.9; 2 cases  
Mascolo v SSLOCSD et.al. and Appleton vs SSLOCSD et. al.
- 2) Conference with Legal Counsel regarding significant exposure to litigation pursuant to Government Code section: § 54956.9 subdivision b; 2 cases

**8. RETURN TO OPEN SESSION, REPORT ON CLOSED SESSION****9. MISCELLANEOUS ITEMS**

- a. Miscellaneous Oral Communications
- b. Miscellaneous Written Communications

**10. ADJOURNMENT**

# **SOUTH SAN LUIS OBISPO COUNTY SANITATION DISTRICT**

Oceano Community Services District  
1655 Front Street  
Oceano, CA 93445

Minutes of the Special Meeting held on Tuesday, July 17, 2012  
6:00 P.M.

## **1. CALL TO ORDER AND ROLL CALL**

**Present:** Chairman Bill Nicolls, City of Grover Beach; Vice Chairman Matthew Guerrero, Oceano Community Services District; Director Tony Ferrara, City of Arroyo Grande.

**Others in Attendance:** John Wallace, District Administrator; Mike Seitz, District Counsel; Bob Barlogio, Plant Superintendent; Matthew Haber, District Bookkeeper/Secretary

## **2. PUBLIC COMMENTS ON ITEMS NOT APPEARING ON AGENDA**

There were no public comments.

## **3. CONSENT AGENDA**

A. Review and Approval of Minutes of the Meeting of June 27, 2012.

B. Review and Approval of Warrants.

C. Financial Report ending June 30, 2012

**It was moved by Director Ferrara, seconded by Vice Chairman Guerrero, to approve Consent Agenda Items 3A, 3B and 3C, as presented. Motion carried unanimously.**

## **4. PLANT SUPERINTENDENT'S REPORT**

Plant Superintendent Barlogio reported the June 2012 data. Average daily flow was 2.53 million gallons, and average chlorine usage was 287 gallons per day. The average effluent BOD was 33 mg/L, and average Total Suspended Solids (TSS) was 30 mg/L. Both have limits of 40 mg/L.

Highest fecal coliform was a 13,000 MPN (limit of 2400 MPN, and previously reported as an anomaly and being investigated with the lab) with a 7-sample median high of 23 MPN (limit of 200 MPN). MPN = Most Probable Number

Plant Superintendent Barlogio reported that some results for effluent BOD and Total Suspended Solids (TSS) for the first week of July have come in. He said the numbers are a bit on the high side (in the mid-40s) which is typical for summer. The BODs coming into the Plant are also higher than normal.

Plant Superintendent Barlogio said the centrifuge would be used a few times in the next month along with the sludge beds. Plant Superintendent Barlogio also said Staff will be rebuilding the Fairbanks-Morse influent pump and will be getting bids for the purchase of an electric motor for this pump.

Vice Chairman Guerrero asked about the 13,000 MPN fecal coliform result from June. Plant Superintendent Barlogio said it was an anomaly since the tests on either side were good (single digit results), and there was a good chlorine residual. He has emailed Katie DiSimone from the Regional Water Board regarding this, but he has not heard back from her. Administrator Wallace commented that given the chlorine residual, the turbidity and the fecal coliform results, which is a part of the total coliform, it is

impossible to have that figure. The conclusion is that it must have been a contaminated bottle or lab error. He said that Plant Superintendent Barlogio had contacted the Water Board asking for a response, but they have not yet responded.

Director Ferrara said he was glad to see that the haz-mat training will be taking place next month.

5. BOARD ACTION ON INDIVIDUAL ITEMS

A. SURPLUS METAL

Plant Superintendent Barlogio said that surplus metal has been accumulating at the Plant since Staff has changed out some big valves and has pulled copper wire for the re-conductoring project. The units are not repairable or reusable. Plant Superintendent Barlogio thinks there are probably 2,000 to 3,000 pounds of scrap iron and 150-200 pounds of copper wire. He recommended selling the scrap metal and placing the monies in the Operating Fund.

**It was moved by Vice Chairman Guerrero, seconded by Director Ferrara to approve the staff recommendation that the Board approve the disposal of surplus (scrap) metal to the best priced recycler. Motion carried unanimously.**

B. SUPPORT OF THE LOCAL GROUNDWATER ASSISTANCE GRANT APPLICATION

Administrator Wallace presented the staff recommendation that the Board affirm their support for the City of Arroyo Grande's application for a Local Groundwater Assistance (LGA) Grant. The City of Arroyo Grande has proceeded with the application seeking a grant for a salt and nutrient management study which would include wastewater recycling studies. The City and the other agencies of the Northern Cities Management Association (NCMA) would like to have letters of support in the application package. A draft letter is included in the Board packet.

Chairman Nicolls asked whether Director Ferrara was aware if the City of Pismo Beach was supporting this effort. Director Ferrara replied that the City of Arroyo Grande had sent a letter to the City of Pismo Beach. Administrator Wallace responded that Pismo Beach has been involved in this process along with the other agencies of the NCMA and were in favor of this grant application.

**It was moved by Director Ferrara, seconded by Vice Chairman Guerrero, to approve the staff recommendation that the Board affirm its support of the City of Arroyo Grande's Local Groundwater Assistance (LGA) Grant Application. Motion carried unanimously.**

C. DEVELOPMENT OF PRETREATMENT ORDINANCE; AGREEMENT FOR PROFESSIONAL SERVICES; CAROLLO ENGINEERS

At a prior meeting, the Board had directed Staff to solicit proposals in preparing and updating the District's pretreatment ordinance. The District's current ordinance has been in effect since 1974 and does not meet the current EPA standards. Staff solicited proposals from a number of engineering firms. Carollo Engineers' original proposal in the amount of \$43,000 was presented to the Board previously, and the Board then directed Staff to try to negotiate a final cost. Staff was able to negotiate the amount to a not-to-exceed amount of \$29,600.

**It was moved by Director Ferrara, seconded by Vice Chairman Guerrero, to approve the staff recommendation that the Board enter into an agreement, in a form approved by District Counsel, with Carollo Engineers for updating the District's Pretreatment Ordinance in a not-to-exceed amount of \$29,600. Motion carried unanimously.**

## 6. MISCELLANEOUS ITEMS

## A. Miscellaneous Oral Communications

Administrator Wallace said that the District had received the final version of LAFCO's Municipal Service Review (MSR) for the City of Arroyo Grande, the City of Grover Beach, Oceano and the District and would be preparing comments.

## B. Miscellaneous Written Communications

Administrator Wallace presented a letter of commendation for Kate Weber. Ms. Weber was the District's technical writer who did a great job in helping to develop the District's Standard Operating Procedures (SOPs).

Administrator Wallace also shared with the Board a letter recognizing Shift Supervisor Trini Rodriguez on his recent performance evaluation. Administrator Wallace said that he had wanted to recognize Shift Supervisor Rodriguez on saving money for the District with the accomplishment of many in-plant projects.

Chairman Nicolls asked about the District newsletter. Administrator Wallace responded that the final modifications to the newsletter had been made and that Staff is coordinating with the Member Agencies as to the timing of when the newsletter would be sent out.

## 7. CLOSED SESSION SPECIAL MEETING

Counsel Seitz pointed out that there was a special meeting set for closed-session at 6:30 tonight. He informed the Board that there had been an error in designating the day of the week for this special meeting. He advised the Board of this fact and said that the Board could declare an urgency action and place it on this agenda with a unanimous vote. Vice Chairman Guerrero moved to hold such an urgency session as part of this agenda which was seconded by Director Ferrara. A roll call vote was made as follows: Vice Chairman Guerrero, yes; Director Ferrara, yes; Chairman Nicolls, yes.

## 8. PUBLIC COMMENT ON CLOSED SESSION

There were no public comments.

## 9. CLOSED SESSION

- (1) Conference with Legal Counsel regarding significant exposure to litigation pursuant to Government Code Section 54956.9; 1 subdivision b; 1 case

## 10. RETURN TO OPEN SESSION; REPORT ON CLOSED SESSION

It was reported that the Board heard Counsel present this item and gave direction to Staff to retain Counsel for Mr. Appleton

## 11. ADJOURNMENT

There being no further business to come before the Board, the meeting was adjourned at approximately 7:00 p.m.

***THESE MINUTES ARE DRAFT AND NOT OFFICIAL UNTIL APPROVED BY THE BOARD OF DIRECTORS AT A SUBSEQUENT MEETING***

SOUTH SAN LUIS OBISPO COUNTY SANITATION DISTRICT  
WARRANT REGISTER  
8/1/2012

ISSUED TO	PURCHASE/SERVICE	INV. # / SERVICE PERIOD	WARRANT NO.	ACCT	ACCT BRKDN	TOTAL
ABBA EMPLOYER SERVICES	CONTRACT LABOR	17844 17857 17862	080112-6777	6085	2,438.16	2,438.16
AIRGAS SAFETY INC.	SAFETY SUPPLIES	9006958285	78	8056	117.52	117.52
APPLIED INDUSTRIAL TECH	MISC SUPPLIES	85747706	79	8030	86.52	86.52
ARAMARK UNIFORMS	EMPLOYEE UNIFORMS	7091275 7109445	80	7025	420.31	420.31
AT&T	TELEPHONE SERVICE	JULY	81	7013	617.38	617.38
BILL NICOLLS	BOARD SERVICE	JULY	82	7075	100.00	100.00
BRENNTAG PACIFIC, INC	PLANT CHEMICALS	214263 217874	83	8050	8,667.07	8,667.07
CA ELECTRIC SUPPLY	MISC SUPPLIES	7826-494017 7826-494018 7826-494707 7826-494775	84	8030	462.78	1,072.80
	ELEC SYS UPGRADE 04 MBI 16	7826-494131 7826-494207		26/8065	610.02	
CENTRAL COAST FENCE	FRONT GATE SERVICE	74190	85	8060	148.39	148.39
E&J AUTO PARTS	MISC SUPPLIES	334191 334388 334389	86	8032	165.97	165.97
ENVIRONMENTAL WATER SOLUTIONS	VAREC PARTS	1610	87	8060	250.18	250.18
FEDEX	SHIPPING	7-951-27229	88	8045	88.21	88.21
FGL ENVIRONMENTAL	CHEMICAL ANALYSIS	281752A 281927A 281949A 281950A 281993A 282016A 282023A 282067A 282081A	89	7078	624.00	624.00
FISHER SCIENTIFIC	LAB SUPPLIES	1112512 1681881	90	8040	357.33	357.33
GRAPHIC CONTROLS	CHART RECORDER	KQ7868	91	8030	239.54	239.54
HDS WHITE CAP CONSTRUCTION SUPPLY	SMALL TOOLS	65065911-01	92	8055	42.25	42.25
I.I. SUPPLY	MISC SUPPLIES	14784 14800 14898 14935 14936	93	8060	521.47	521.47
JB DEWAR INC	VEHICLE FUEL AND OIL	800249	94	8020	76.23	76.23
KEMIRA	FERRIC CHLORIDE	9017281824	95	8050	7,101.33	7,101.33
LIBERTY COMPOSTING	BIOSOLIDS REMOVAL	4667	96	7085	17,786.48	17,786.48
LIEBERT CASSIDY WHITMORE	LEGAL SERVICES	153728 (PRIOR YEAR)	97	7071	240.00	240.00
LINC DELIVERY	DELIVERY SERVICE	JUNE (PRIOR YEAR)	98	8040	367.50	367.50
MATTHEW GUERRERO	BOARD SERVICE	JULY	99	7075	200.00	200.00
MINERS ACE	MISC SUPPLIES	JUNE (PRIOR YEAR)	6800	8035	327.39	327.39
PERS MEDICAL	EMPLOYEE MEDICAL	AUGUST	6801	6010	12,227.42	12,227.42
PG&E	ELECTRICITY SERVICE	6/13/12 TO 7/12/12	6802	7091	11,256.90	11,256.90
SEARS COMMERCIAL ONE	SMALL TOOLS	T908720	3	8055	175.35	175.35
SHIPSEY & SEITZ	LEGAL SERVICES	JUNE (PRIOR YEAR)	4	7071	16,401.95	16,401.95
SLO COUNTY AUDITOR-CONTROLLER	LAFCO BUDGET SHARE	2012-13	5	7069	9,234.99	9,234.99
SM TIRE	TRAILER TIRES	571368	6	8030	206.78	206.78
TEKTEGRITY	MANAGED IT SERVICE	22382-112	7	7015	346.50	346.50
TELEDYNE ISCO	LAB SUPPLIES	998767	8	8040	289.99	289.99
TITAN INDUSTRIAL	MISC SUPPLIES	1050822 1050868 1050820 1050829 1050784 1050869	9	8035 8056 8060	60.98 313.10 276.70	650.78
TONY FERRARA	BOARD SERVICE	JULY	10	7075	100.00	100.00
UNDERGROUND SERVICE ALERT	DIG ALERT SERVICE	12007808	11	7011	216.00	216.00
VOLT MANAGEMENT CORP	CONTRACT LABOR	27574888	12	6085	75.00	75.00
WESCORP	WORK ON ELEC SYS UPGRADE	103 04 MBI 16	13	26/8065	3,950.09	3,950.09
WW GRAINGER	SAFETY SUPPLIES	9871525029 9871703493	14	8056	581.84	581.84
SUB TOTAL					97,769.62	97,769.62
PAYROLL	PPE 07/13/2012				22,586.20	22,586.20
GRAND TOTAL					120,355.82	120,355.82

We hereby certify that the demands numbered serially from 080112-6777 to 080112-6814 together with the supporting evidence have been examined, and that they comply with the requirements of the SOUTH SAN LUIS OBISPO COUNTY SANITATION DISTRICT. The demands are hereby approved by motion of the SOUTH SAN LUIS OBISPO COUNTY SANITATION DISTRICT, together with warrants authorizing and ordering the issuance of checks numbered identically with the particular demands and warrants.

BOARD OF DIRECTORS:

DATE: \_\_\_\_\_

\_\_\_\_\_  
Chairman

\_\_\_\_\_  
Board Member

\_\_\_\_\_  
Board Member

\_\_\_\_\_  
Secretary



## SOUTH SAN LUIS OBISPO COUNTY SANITATION DISTRICT

Post Office Box 339 Oceano, California 93475-0339

1600 Aloha Oceano, California 93445-9735

Telephone (805) 489-6666 FAX (805) 489-2765

<http://www.sslocsd.org/>

---

**To:** Board of Directors  
**From:** Bob Barlogio, Plant Superintendent  
**Via:** John Wallace, District Administrator *W*  
**Date:** August 1, 2012  
**Subject:** Superintendent's Report

As of this writing, for July of 2012, the data is as follows:

Average daily flow 2.60 million gallons per day with a maximum day of 2.76 million gallons

Average chlorine usage 314 gallons per day, we have done more chlorinated FFR flushes

Highest fecal was a 300mpn (limit of 2000), 7 sample median high is a 4mpn (limit of 200)

BOD's monthly average in- 378 mg/l, 39out- mg/l

TSS's monthly average in- 396mg/l, out-41 mg/l

Our limit on both is 40 mg/l, monthly average.

The data below shows how the loading increases during the summer. July 2012 data is just for the 1<sup>st</sup> two weeks of the month.

Influent BOD		Influent TSS	
Monthly Average		Monthly Average	
	2011	2011	2012
Jan	278	Jan	425
Feb	248	Feb	840
Mar	261	Mar	379
Apr	274	Apr	365
May	301	May	397
Jun	327	Jun	345
Jul	353	Jul	362
Aug	383	Aug	375
Sep	317	Sep	350
Oct	314	Oct	312
Nov	308	Nov	318
Dec	350	Dec	372
Average	310	Average	403

360

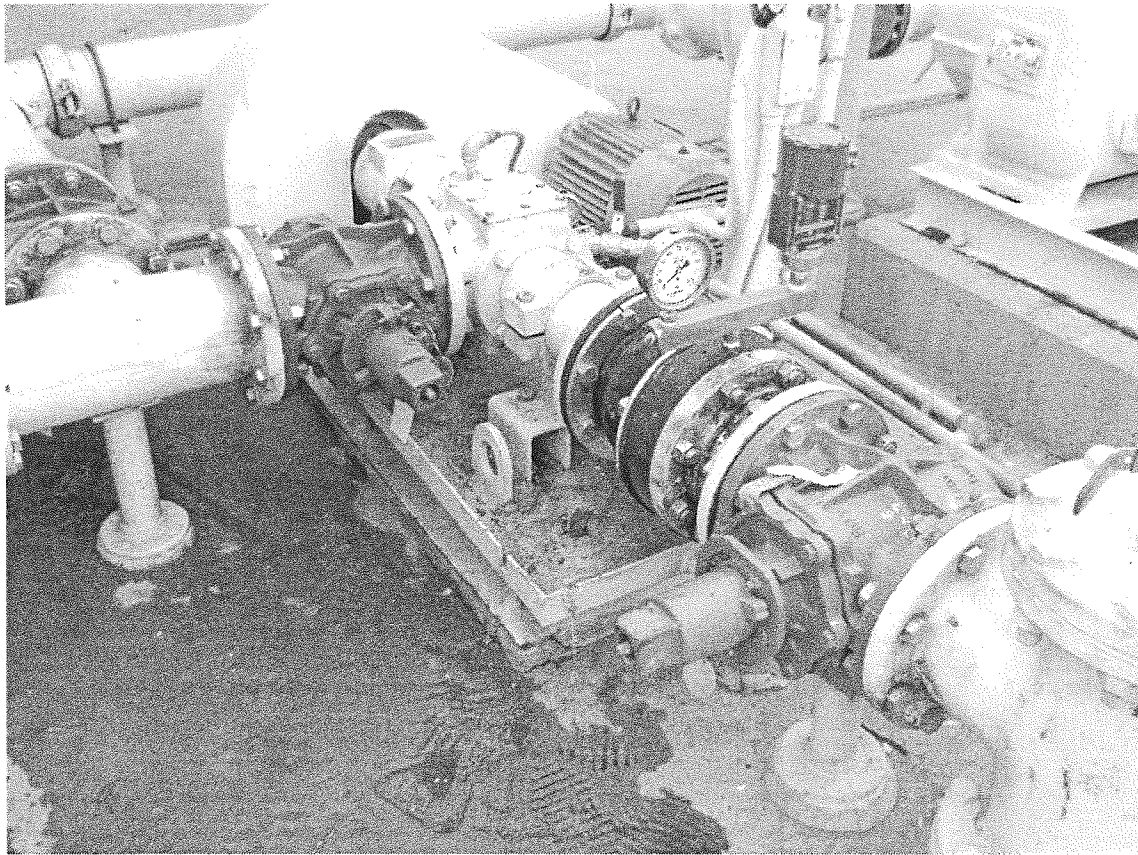
As you can see, the influent loading increases towards summer, this affects the final effluent results. Staff is trying to reduce the plant loading by running the centrifuge more; this will remove solids from the digesters. Staff is also adding polymer trying to increase settling in the primary clarifiers. With this FFR design, operators do not have a lot of changes we can make to influence the performance of the FFR. I think we will still be in compliance, but it will be close.

	Effluent BOD		Effluent TSS	
	Monthly Average		Monthly Average	
	2011	2012	2011	2012
Jan		29		25
Feb	19	23	20	21
Mar	30	25	25	26
Apr	26	20	25	29
May	31	21	28	30
Jun	27	33	28	32
Jul	43	39	30	41
Aug	47		33	
Sep	31		30	
Oct	28		32	
Nov	25		28	
Dec	26		28	
Average	30	27	28	29

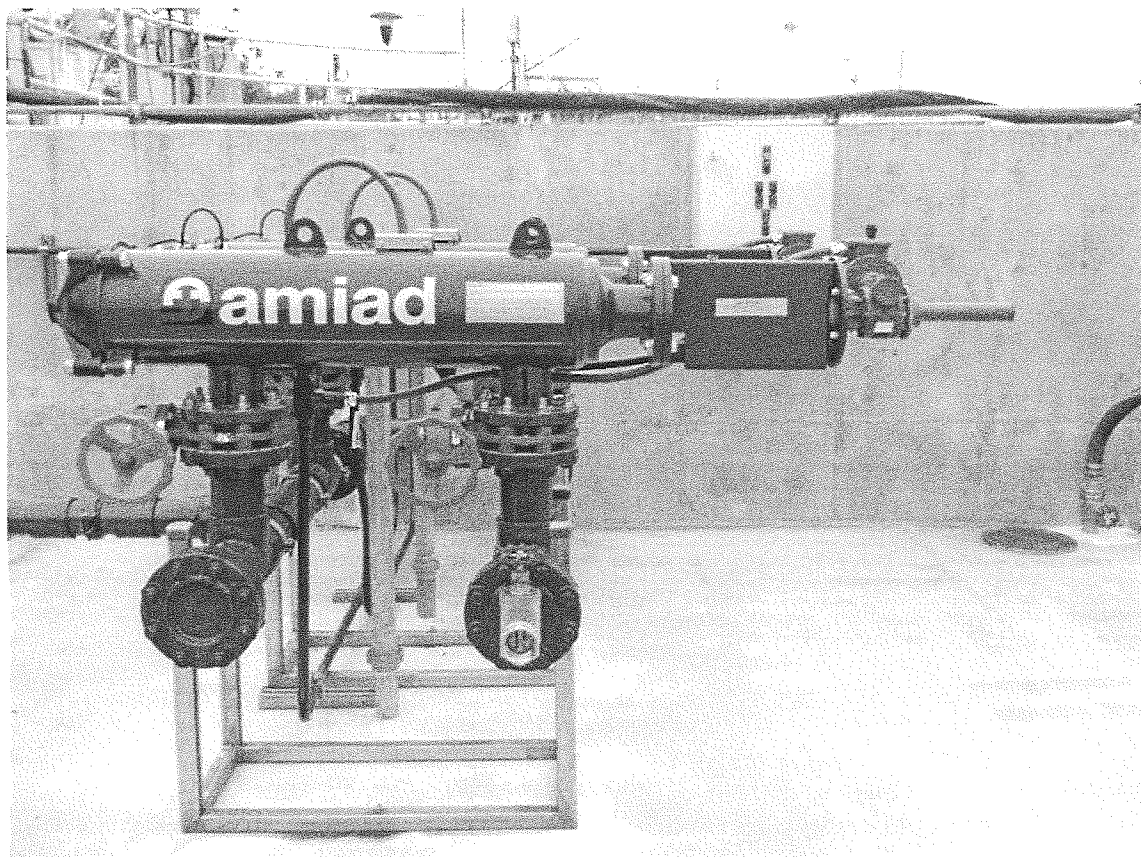
	Average Influent Flow	
	2011	2012
Jan	2.47	2.52
Feb	2.65	2.47
Mar	2.6	2.62
Apr	2.61	2.56
May	2.57	2.54
Jun	2.59	2.53
Jul	2.66	<u>2.6</u>
Aug	2.58	
Sep	2.53	
Oct	2.53	
Nov	2.52	
Dec	2.5	
average	2.57	2.55



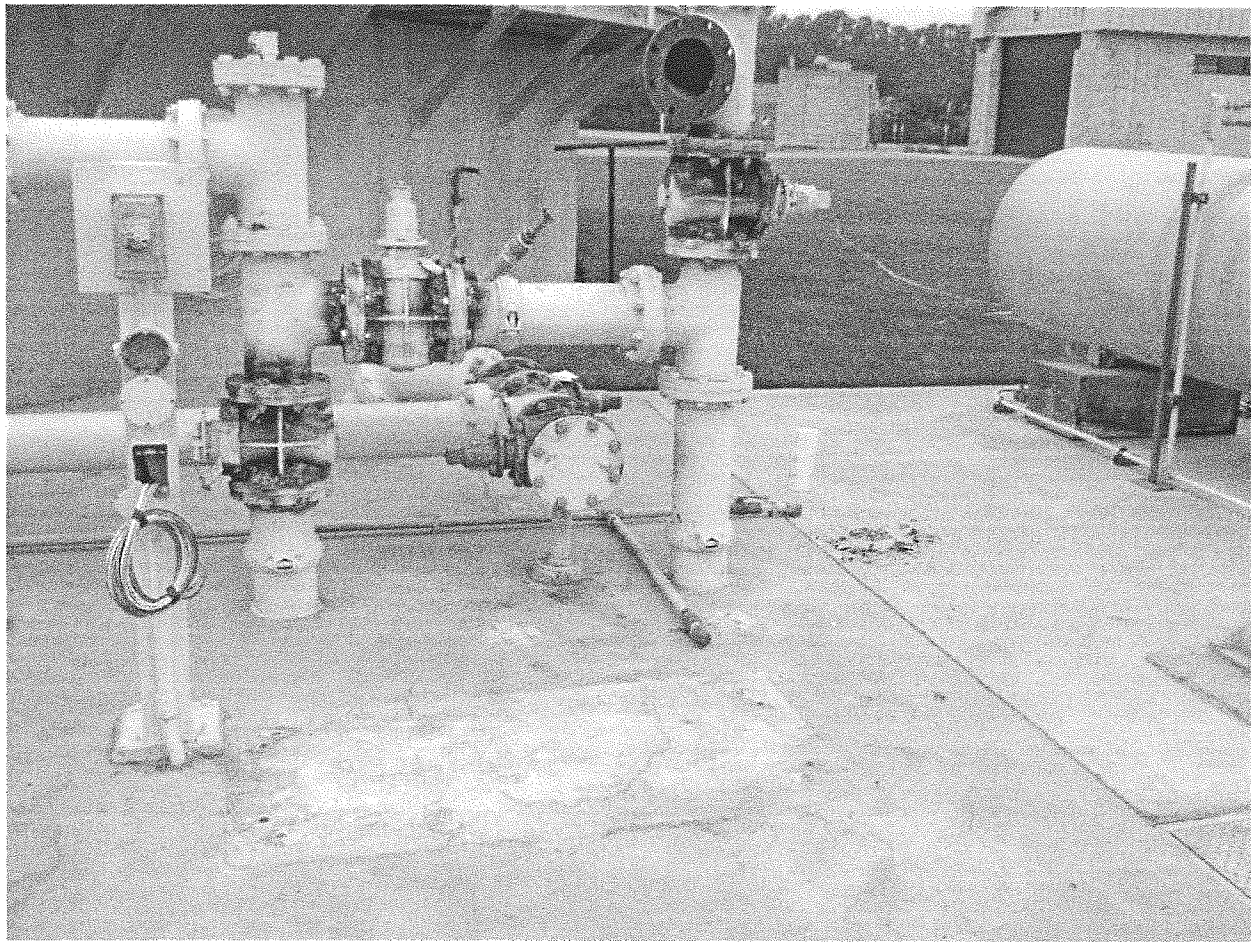
Staff has been replacing several 6 inch plug valves at the # 2 primary clarifier. Also replaced a pressure sensor isolation ring. This protects the pump and piping from over pressurizing the system by sensing high pressure and shutting down the pump.

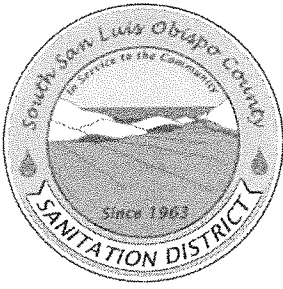


The water filter that will clean the water before it goes to the mechanical seals. This unit will filter down to 50 microns and automatically clean it's self.



Staff plans to place a stand-by sludge pump in this location for the # 2 primary clarifier. This will give us redundancy if the primary sludge pump fails. Currently, staff must divert their time and efforts to make repairs immediately if the one and only sludge pump has a problem.





# SOUTH SAN LUIS OBISPO COUNTY SANITATION DISTRICT

Post Office Box 339 Oceano, California 93475-0339

1600 Aloha Oceano, California 93445-9735

Telephone (805) 489-6666 FAX (805) 489-2765

<http://sslocsd.org/>

## Staff Report

**To:** Board of Directors  
**From:** Bob Barlogio, Plant Superintendent  
**Via:** John Wallace, District Administrator  
**Date:** August 1, 2012  
**Subject:** Loader tires

### Recommendation:

Staff recommends the Board approve the purchase and installation of four tires for the District front loader for the amount of \$3,746.43 from Big M Tire.

### Funding:

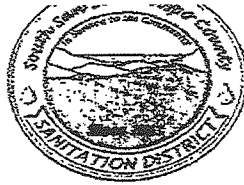
Funding will from 19-8030, Equipment Maintenance. This account started with \$ 100,000 for fiscal year 2011/12. We have spent \$ 285 from this fund to date. If this purchase is approved, account 19-8030 will have \$ 99,715 remaining.

### Discussion:

This purchase is for the tires for the District's front loader. The existing tires are getting to the point that while cleaning the sludge beds, the loader has trouble getting traction exiting the sludge drying beds. The tires have been in service for many years and are to the point of having minimum tread left.

Staff obtained quotes from the following dealers:

Big M Tire	\$3,746.43
Wayne's Tire	\$3,982.92
SM Tire	\$4,409.75
Berchtold Equipment	\$4,447.04



## South San Luis Obispo County Sanitation District

Ship to Address:  
1600 Aloha Place  
Oceano, CA. 93445  
(805)489-6666

Bill to Address:  
P.O. Box 339  
Oceano, CA. 93445  
(805)481-6903

### Purchase Requisition

Date: 7-20-12

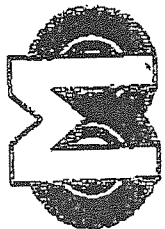
Item Description: 17.5" X 25 L-2 G-2 16 ply tire (4) ea. and installed  
for 621 B Case loader.

Supplier: Big M Tire  
Wayne's Tire  
SM Tire

Cost: 3746.43 w/ Freight & Tax  
3982.92 w/ Freight & Tax  
4409.75 w/ Freight & Tax

Additional Information: Case loader 621 B tires are bald and badly worn.  
These tires make the loader unsafe to operate. SSLOCSD staff  
would like to purchase (4) new tires and have them installed.

Submitted by: [Signature]



Big M Tire

575 Guadalupe Street

P.O. Box 756 • Guadalupe, CA 93434

(805) 343-2006 FAX# (805) 343-1976

ATT Trini

SOLD TO		South SLO Sanitation		ACCOUNT NO.		DATE		TERMS		EQ. NO.		SALES TAX		NO. 52413	
ADDRESS				MAKE		YEAR		MILEAGE		LICENSE NO.		SALES TAX - 7.75%		SALESMAN	
CITY		STATE		ZIP		TELEPHONE		P.O. NO.		W.O. NO.		TOTAL			
QTY	CODE	PLY	DESCRIPTION										UNIT PRICE	TOTAL	
4		16	175X25 Loader Dwg										777	3110	
4			O ring										9	39	
1			Service Call										65	65	
4			Dis & Mounts										40	160	
4			Disposals										30	120	
			TIRE DISPOSAL												
			STATE FEE										1	7	
4															
SIGNATURE													SALES TAX - %	244	15
													SALES TAX - 7.75%		
													TOTAL	3746	43
													DOWN PAYMENT		
													UNPAID BALANCE		

3595 S. Higuera Street  
San Luis Obispo, CA 93401  
(805) 543-5492 Fax: (805) 928-9703  
BAR ARD154969 CAL000038874

Customer Copy

Quote #405090

South San Luis Obispo County Sanitation  
District

Printed: 1:54:34 PM 7/12/2012

San Luis Obispo CA 93401

Ordered on  
Wednesday, July 11, 2012

MAKE & MODEL		FLEET NO.	PHONE	REP.	CSH	PO #	TERMS			
CASE 621				Tim Thompson	-		Cash			
LICENSE NO.	MILES IN/OUT	VIN	TORQUE	ENGINE SIZE	TRANSMISSION	COLOR	PRD DATE			
CATALOG		DESCRIPTION		QTY	PARTS	LABOR	DISC	FET	TOTAL	Code
1601		REGULAR SERVICE CALL		1		80.00			\$80.00	TTL-TT
800		ENERGY CHARGE ON SERVICE CALLS		1	10.00				\$10.00	
1403		LRG TRACTOR TIRE DISMNT&MT		4		60.00			\$240.00	TTL-TT
475L		17.5X25 L-2 G-2		4	822.72				\$3,290.88	TT
900		State Tire Recycling Fee		4	1.75				\$7.00	
990		Truck Tire Disposal Fee		4	25.00				\$100.00	

Robert Barlogio Superintendent

5100

ENVIRONMENTAL FEE

\$0.00

Wayne's Tire

"A Good Place to Re-Tire"



TIM THOMPSON  
SALES / SERVICE

3595 S. HIGUERA, SAN LUIS OBISPO  
(805) 543-5492 • CELL: (805) 431-0016

Welcome, We appreciate your business.

Parts	\$3,290.88	Taxable	\$3,290.88
Labor	\$320.00	Non-Taxable	\$437.00
Freight	\$0.00	Local Tax	\$255.04
Other	\$117.00		
FET	\$0.00		
Supplies	\$0.00		
		<b>Estimate</b>	<b>\$3,982.92</b>

Parts and Labor warranties 100% for 90 days or 4000 miles, whichever comes first. This warranty limited to the work on this form only. Vehicle must be returned to our shop at customer's expense, to honor warranty. I hereby authorize the repair work to be done along with the necessary materials. You and your employees may operate vehicle for purposes of testing, inspection or delivery at my risk. An express Mechanic's lien is acknowledged on vehicle to secure the amount of repairs hereinto. You will not be held responsible for loss or damage to vehicle or articles left in vehicle in case of fire, theft, accident or any other cause beyond your control. Because of the extent of the teardown and inspection, the vehicle may not perform as well as before. No refunds on installed Tires and or Wheels, Special Orders or discontinued items. All returns are subject to 15% handling charge. Any deposits are subject to forfeit if cancelled.

Print Name \_\_\_\_\_ Signature \_\_\_\_\_ Date \_\_\_\_\_

Prices may not reflect applicable sales tax.

Page 1 of 1



GOODYEAR

BANDAG

DUNLOP

BRIDGESTONE

KELLY TIRES

TIRE SERVICE



PLEASE REMIT TO:

SM TIRE  
P.O. BOX 6007  
SANTA MARIA CA 93456  
(805) 347-4793

COMMERCIAL-STORE 2  
40 MONTGOMERY AVE.  
EL RIO/OXNARD, CA 93038  
805 642-0174 or 669-0077

COMMERCIAL  
SANTA BARBARA  
GOLETA, CA  
805 882-1804

COMMERCIAL-STORE 1  
630 E. BOONE ST.  
SANTA MARIA, CA 93454  
805 928-2501

RETAIL-STORE 4  
119 W. BETTERAVIA RD.  
SANTA MARIA, CA 93454  
805 922-4557  
BAR # AE 132104  
EPA # CAL000360290

RETAIL-STORE 5  
1270 E. CHAND AVE.  
ARROYO GRANDE, CA 93420  
805 473-1137  
BAR # AG 140873  
EPA # CAL 000039890

RETAIL-STORE 3  
9199 EL CAMINO REAL  
ATASCADERO, CA 93422  
805 466-6223  
BAR # AM 066858  
EPA # CAL 000039891

COMMERCIAL-STORE 0  
9197 EL CAMINO REAL  
ATASCADERO CA 93422  
805 466-6224

BILL TO

ACCOUNT NO./STORE NO  
SOUTH-SAN LUIS OBISPO CO. 51873/01  
SANITATION DISTRICT  
P.O. BOX 339  
OCEANO CA 93445

SHIP TO

SOUTH-SAN LUIS OBISPO CO.  
SANITATION DISTRICT  
P.O. BOX 339  
OCEANO CA 93445

QUOTE  
07/06/12

CUSTOMER NO.	MAKE/MODEL	LICENSE	MILEAGE	TELEPHONE	ROUTE/ST	SHIP VIA	COMPUTER #	PAGE
	LOADER	6218		(805) 7481-6903	3 01	NA	369483	1

INVOICE DATE	INVOICE NO.	PREVIOUS SHIP INVO NO.	TERMS	CREDIT APPROVAL
			NET 30	07/06/12 15:54:39

ITEM NUMBER	SIZE	QTY	UNIT PRICE	EXTENSION
18004	CALIFORNIA	4	1.75	7.00
17017	SERVICE CALL	5	73.00	365.00
17079	METAL VALVE STEMS	4	10.95	43.80
17074	224	4	10.25	41.00
TRINIDAD RODRIGUEZ 409-6666 FAX: 409-2765				

## Safety / Maintenance notice:

All lug nuts should be checked for proper torque after a short distance. After market wheels must be retorqued within 30 miles and checked periodically.

Tread Depth: LF \_\_\_\_\_ RF \_\_\_\_\_ LR-O \_\_\_\_\_ LR-I \_\_\_\_\_ RR-O \_\_\_\_\_ RR-I \_\_\_\_\_

A FINANCE CHARGE OF 1.99% PER MONTH (18% ANNUAL PERCENTAGE RATE) WILL BE CHARGED ON ALL INVOICES OVER 30 DAYS PAST DUE

\* Tax Codes

PARTS	LABOR	TAX	TAXABLE AMT	TAX	RET.	MISC. AMT	TOTAL
							4409.75

I acknowledge the total charges and receipt of this invoice. I have taken possession of this vehicle and release SM Tire from all loss, and damage to this vehicle along with any articles left in or around this vehicle

CUSTOMER SIGNATURE:

PLEASE PRINT NAME

FILE

X



**BERCHTOLD**  
EQUIPMENT COMPANY

Since 1910

1410 W. Balleravia Rd, Santa Maria, CA 93455  
(805)922-7605 Fax (805)349-0147  
WWW.BERCHTOLD.COM

GEARMORE

WIGGINS

ZIEMAN

Kubota

Sprague

Bobcat

DURAND  
WAYLAND

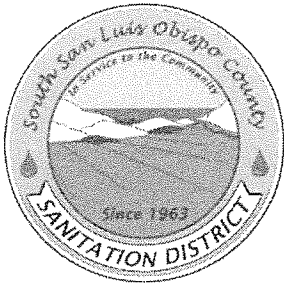
SOLD TO

49335 SLO CTY SANITATION DISTRICT  
P.O. BOX 339  
OCEANO, CA 93475

SHIP TO

Tax	D	Qty	Description	Price	Amount
GROUP 1 01					
COUNTER PARTS					
U		1	MIS 17 5X25L 20 2 1B 21V 1TRE	976.00	3904.00
<p style="text-align: center;">\$45.00 per wheel 180.00 In Shop</p> <p style="text-align: center;">\$65.00 per 260.00 Travel To Location</p>					
<p>PARTS MUST BE RETURNED WITHIN 30 DAYS OF PURCHASE.....SPECIAL ORDERED ITEMS, IF RETURNABLE, ARE SUBJECT TO A 20% RESTOCKING FEE WHEN RETURNED            ***** NO RETURNS ON ELECTRICAL ITEMS ***** NO RETURNS ON ELECTRICAL ITEMS ***** NO RETURNS ON ELECTRICAL ITEMS *****            ** ALL ORDERED ITEMS MUST BE PICKED UP WITHIN 10 DAYS OF ARRIVAL OR THEY WILL BE RETURNED AND RESTOCK FEES MAY APPLY **            *** INVOICE REQUIRED FOR ANY RETURNS ***</p>					
** SUBTOTAL					3904.00
** SALES TAX					283.04
X Charge Sale					
Phone: (805) 489-6666					
PAY THIS AMOUNT					\$4187.04

4447.04



# SOUTH SAN LUIS OBISPO COUNTY SANITATION DISTRICT


Post Office Box 339 Oceano, California 93475-0339

1600 Aloha Oceano, California 93445-9735

Telephone (805) 489-6666 FAX (805) 489-2765

<http://sslocsd.org/>

## Staff Report

**To:** Board of Directors  
**From:** Bob Barlogio, Plant Superintendent  
**Via:** John Wallace, District Administrator   
**Date:** August 1, 2012  
**Subject:** Chart Recorder purchase

### Recommendation:

Staff recommends the Board approve the purchase of a Honeywell DR4500, two pen chart recorder with totalizer and 5 boxes of charts, from USA Bluebook not to exceed **\$2,668.73**.

### Funding:

Funding will from 19-8030, Equipment Maintenance. This account started with \$ 100,000 for fiscal year 2011/12. We have spent \$285. from this fund to date, leaving \$99,715 in the account. If this purchase is approved, the remaining balance will be approximately \$97,046.27 depending on actual cost.

### Discussion:

When the head works project starts to move forward, we will not have a means to monitor and record the effluent flow accurately. This unit will record the flow on a circular chart and totalize the influent and effluent flow. We will have the unit calibrated upon installation.

Staff obtained quotes from the following dealers, just for the chart recorder:

USA Bluebook	\$2,344.95, plus tax and shipping
Lesman Instruments	\$3,580.00, plus shipping and tax
Industrial Controls	\$3,787.06, plus shipping and tax

Welcome: Guest | My Account | Login

Wish List | Shopping Cart: 0 item(s)

**USABlueBook**  
 Get the Best Treatment™

 You're the boss...  
 how are we doing?  
 Give us your feedback!

Search for...

Find It

Home

Products

Contact Us

Resources

Help

Now In: [Chart & Data Recorders](#) / [Honeywell Chart Recorders](#) / Honeywell DR4500 12" Classic Chart Recorder, 2-Pen, 2-Totalizers

## Honeywell DR4500 12" Classic Chart Recorder, 2-Pen, 2-Totalizers

☒ E-mail this product to a friend

- Continuously displays process variables
- Large 12" chart for greater resolution
- Digital display

Item: 37023

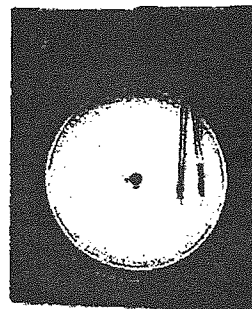
Weight: 14.0 lbs

Catalog Price: \$2,344.95

Quantity: 1

Add to Cart

Add to Wish List


[View larger image](#)

 Catalog Page 62  
 Product Manual

Honeywell's Classic Series 12" recorder is user configurable and uses traditional ink pens to draw a trace on preprinted charts while also continuously displaying a process variable value. During normal operation, the display shows selectable operating parameters and values. It also indicates diagnostic error messages and displays function group and parameters in the configuration mode. English language prompts, coupled with simple keystroke sequences, make configuring the recorder easy and straightforward.

Our stock recorders are available with 1 or 2 pens and 1 or 2 totalizers. Non-stock recorders are available with a host of other options such as chart illumination, RS485 communications, On/Off or PID control outputs, alarm/timer functions, and digital input capability. Up to two optional integral alarms are easily set to announce selected out-of-limit conditions and include SPST relays to activate external equipment. Optional digital inputs (dry contact closures) allow you to remotely initiate recorder functions such as resetting totalizers. The recorder includes a 24-VDC transmitter power supply.

### Related Products

No Related Products

recorder 2344.95

charts 104.25

shipping 38.63

TAX 108.40

Total 2668.73

[Home](#) | [Site Map](#) | [About Us](#) | [Product Specials](#) | [Quotes](#) | [Resource Center](#) | [Tech Help](#) | [Catalog Request](#)  
[Contact Us](#) | [Se habla español](#) | [World Service](#) | [My Account](#) | [Privacy Policy](#) | [Terms Of Access](#) | [Sales Terms](#)

Items sold by USABlueBook are intended for use only by professionals in the water and wastewater treatment industry. Many items sold by USABlueBook require supplemental training, licenses or permits for proper use and may be harmful if not used properly.

All content © copyright 2012 by HD Supply Facilities Maintenance Ltd., d/b/a USABlueBook.

Welcome: Guest | My Account | Login

Wish List | Shopping Cart: 0 item(s)

**USABlueBook**  
 Get the Best Treatment™

 You're the boss...  
 how are we doing?  
 Give us your feedback!

Search for...

Find It

Home

Products

Contact Us

Resources

Help

Now In: [Chart & Data Recorders](#) / [Honeywell Charts](#) / Honeywell Circular Chart Paper (7day/24hr, 12", 0-100, 25/bx) 30755311

## Honeywell Circular Chart Paper (7day/24hr, 12", 0-100, 25/bx)

**30755311**
☒ E-mail this product to a friend

For use with chart recorders:

Honeywell - DR4500 Classic, Servoline, Class 15, Class 22, Class 45, Class 60, Class 70

Item: 61806

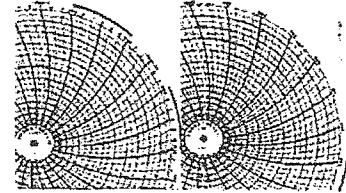
Weight: 1.0 lbs

Catalog Price: \$26.95

Quantity Price Break Per Box

4+ \$20.95

\*Discount applied after quantity is added to cart.



Quantity: 1

Add to Cart

Add to Wish List

[View larger image](#)

Catalog Page 68

### Related Products

No Related Products

5 boxes @ \$20.95 / box = \$104.75

[Home](#) | [Site Map](#) | [About Us](#) | [Product Specials](#) | [Quotes](#) | [Resource Center](#) | [Tech Help](#) | [Catalog Request](#)  
[Contact Us](#) | [Se habla español](#) | [World Service](#) | [My Account](#) | [Privacy Policy](#) | [Terms Of Access](#) | [Sales Terms](#)

Items sold by USABlueBook are intended for use only by professionals in the water and wastewater treatment industry.  
 Many items sold by USABlueBook require supplemental training, licenses or permits for proper use and may be harmful if not used properly.

All content © copyright 2012 by HD Supply Facilities Maintenance Ltd., d/b/a USABlueBook.


[Login](#) | [Send Mail](#)
[VIEW CART](#) | [SEND ORDER](#) | ITEMS ORDERED:0 , CART VALUE:0

[Products](#) | [Sales Policies](#) | [Search by SKU](#) | [Send Mail](#)
[Search the Site](#)


## Product Sections

Lesman Instrument Company: Your source for process control instrumentation.  
 Free UPS Ground shipping on orders over \$500.  
 Good only on orders placed through this website, shipping within the continental US.

### Honeywell Truline 12" Circular Chart Recorder - Relay Expansion Model

Key Number: DR45AR

Inputs - Channel 1: 1, Channel 2: 1, Channel 3: 0, Channel 4: 0

External Outputs - Control Output 1: 4, Control Output 2: 4

Interface Selection - External Interface: 0, Pen Type: 0, Alarms: 1

Software - Totalization Options: E

Door and Latch Options - Door: 0, Latch: 0

Configuration and Approvals - Options: 0, Approvals: 0

Certs and Manuals - Tags and Certifications: 0, Manual: E-0

Price: \$3,580.00 (Excluding Sales Tax)

Quantity: 1

[Add to Cart & Keep Shopping](#)
[Place Your Order](#)
[Cancel](#)

\* denotes required fields highlighted.

## Store Information

## Best Sellers

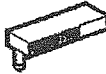
### Honeywell Circular Chart 30755317-001



Box of 100. Normally  
Available from Stock.  
Chart Size  
(Diameter): 11-7/8"

Compatible

### Universal Marking Product 82-39-0306-06 30735489-007



Pack of 6. Normally  
Available from Stock.  
Replaces Pen  
390-600-6. Purple  
Marker, Nib Size:  
0.600"

[find out more](#)

### Taylor Bi-Therm Bimetallic Dial Thermometers



Some models  
available from stock.  
Normally two week  
delivery. Make one  
selection from each  
category to build your  
complete model

### Replacement Pen Arm 30756304-501



Normally available  
from Lesman stock,  
ready to ship within  
24 hours

For Honeywell  
Truline Recorders.

### Universal Marking Product 82-39-0202-06 30735489-002

Pack of 6. Normally  
Available from Stock.  
Replaces Pen  
390-370-2 and

Select Language ▼

**Industrial Controls**

Logon | My Account | View Cart | Shopping Lists

**1 (800) 281-4788**Products **Alphabet**

Home Products Training Service &amp; Support Resources Company

Search by Part or Keyword

GO

**Shop Industrial Controls Products**Browse by Manufacturer ▶  
Browse by Category

- ▶ Combustion
- ▶ Chart Paper & Pens
- ▶ Dampers & Actuators
- ▶ Controllers & Recorders
- ▶ Flow Meters & Level Sensors
- ▶ Humidity, Analytical & Gas
- ▶ HVAC Controls- Electric
- ▶ HVAC Controls- Pneumatic
- ▶ PLCs and Automation
- ▶ Pressure
- ▶ Temperature
- ▶ Valves
- ▶ VFDs & Electrical
- ▶ Wireless Devices

Home &gt;&gt; Item Detail

**Item Detail**

Item Code: DR45AH-1100-10-000-0-SA000E-0

Description: HONEYWELL DIGITAL RECORDER  
DR4500  
MFG PART NUMBER CHANGE TO  
INCLUDE HARD COPY MANUAL

Availability: Usually ships within 17 days

Price: \$3,787.06

Quantity: 1

Vendor: HONEYWELL CONTROLLERS

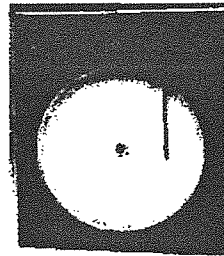
Pkg Size 1

Unit Size 1

Click Here for  
Specification Page

Add to Cart

Add to Quote




Continue Shopping

Update Quantity

FAQ

Home

Register online  
for the best pricing  
and best service


Effective 6/1/2010  
Free UPS Ground  
shipping on all orders  
over \$400 for registered  
customers!

Register today! ⓘ

**Quick Order Pail**

#	Product Code	Quantity
1		
2		
3		
4		
5		

Add to Cart

You can also buy online now  
with your major credit card




No Registration Needed

SECURED by  
**digicert**  
01-02-14  
Identity Assured  
SSL CERTIFICATE

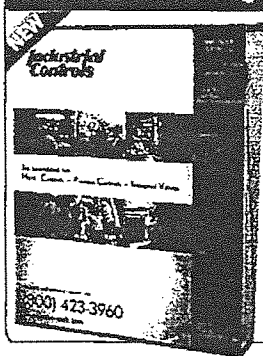
Live Help  
Chat Online > Chat Now

REQUEST A QUOTE ⓘ

REQUEST PROJECT PRICING ⓘ

REQUEST LITERATURE ⓘ

REQUEST A CATALOG ⓘ

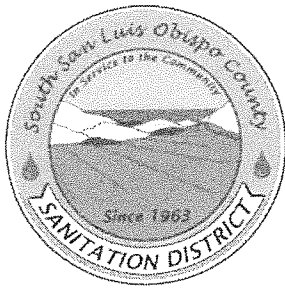


TECHTIPS ⓘ

TRAINING  
AND VIDEOS ⓘENGINEERING  
AND SUPPORT  
SERVICES ⓘInventory Clearance  
Get a great deal on  
surplus items ⓘProducts and Resources  
For...

- ▶ Contractors
- ▶ OEM
- ▶ Reseller
- ▶ End User

Site Map | Privacy | Shipping | International | Returns  
Copyright 2009, Industrial Controls



## SOUTH SAN LUIS OBISPO COUNTY SANITATION DISTRICT

Post Office Box 339 Oceano, California 93475-0339

1600 Aloha Oceano, California 93445-9735

Telephone (805) 489-6666 FAX (805) 489-2765

<http://sslocsd.org/>

### Staff Report

**To:** Board of Directors  
**From:** Bob Barlogio, Plant Superintendent  
**Via:** John Wallace, District Administrator  
**Date:** August 1, 2012  
**Subject:** Electric Motor purchase

#### Recommendation:

Staff recommends the Board approve the purchase of a 40 horsepower electric motor from Perry's for \$6,256.88, plus freight.

#### Funding:

Funding will from 26-8065, Influent Pumps Failure Readiness/Refurbishment. This account started with \$ 437,300 for fiscal year 2011/12. We have not used this account this year. If this item is approved, we would have \$431,043 remaining.

#### Discussion:

As we move forward replacing the pumps, we need to replace the electric motors also. These motors are new, high efficiency motors, and should give us long life. The existing motors have been exposed to wet conditions, possible reducing their reliability. This electric motor would be coupled to the pump that is in the process of getting rebuilt.

I'm requesting the motor now because there is a 9 week wait for delivery.

Staff obtained quotes from the following, not including tax and freight:

Perry's Electric Motors	\$5,806.85
Lahr Electric Motors	\$7,511.51
Kern Electric	\$7,792.74
NIDEC Motor Corp	\$9,873.00

# PERRY'S

ELECTRIC MOTORS & CONTROLS

414 S Western Ave.  
Santa Maria, CA 93458

## Estimate

Date	Estimate #
7/11/2012	4204

Name / Address
SLO COUNTY SANITATION P. O. BOX 339 OCEANO, CA 93445

		Job No.	Project
Description		Qty	Cost
40HP 900RPM 365T TEFC PREM EFF TATUNG MOTOR PLUS FRT FROM LOS ANGELES	1	4,716.34	4,716.34T
40HP 900RPM 365T TEFC PREM EFF WEG MOTOR PLUS FRT FROM TX	1	6,311.49	6,311.49T
40HP 900RPM 365T TEFC PREM EFF US MOTOR PLUS FRT FROM MS, 9 WEEK DELIVERY	1	5,806.85	5,806.85T
		Subtotal	\$16,834.68
		Sales Tax (7.25%)	\$1,220.51
Phone # 805-925-8761 Fax # 805-925-8762 sheila_salters@perrysselectric.com	Total		\$18,055.19



**LAHR ELECTRIC MOTORS, INC.**

119 W. Mill Street  
Santa Maria, Ca. 93458

Phone # (805) 922-8326

sales@larhelectric.com

Fax # (805) 925-2864

**Estimate**

Date	Estimate #
7/11/2012	20183

**Ship to Address**

South San Luis Co. Sanitation Dist.  
P.O. Box 339  
Oceano, Ca. 93475-0339

P.O.	Project

Description	Qty	Unit Price	Total
U.S., 40hp, 890 rpm, 365T frame, TEFC, inverter duty rated (implied) <sup>3</sup>	1	7,511.51	7,511.51
Marathon, 40hp, 890 rpm, 365T frame, TEFC, inverter duty rated	1	7,859.63	7,859.63
Note: quotes do not reflect tax or freight			
Allow 8 weeks for U.S. Motors delivery.			
Allow 5-7 days for Marathon delivery.			
<b>Subtotal</b>			\$15,371.14
<b>Sales Tax (7.75%)</b>			\$0.00
<b>Total</b>			\$15,371.14

PRICE QUOTATION  
KENN ELECTRIC DISTRIBUTORS  
415 30TH STREET  
BAKERSFIELD, CA 93301

Page : 1 Printed At : 11:47:14 12 JUL 2012

Quote Date	Quote No.	Quote Expiration Date	Writer	Slam	WH
07/12/12	54623	08/11/12	BJR		1

Quoted To: SOUTH-0001

SO., SAN LUIS OBISPO SANITATION  
P.O. BOX 339  
OCEANO, CA 93445

Ship To: SOUTH-0001

SO. SAN LUIS OBISPO SANITATION  
1600 ALOHA PLACE  
OCEANO, CA 93445

### Quotation Note:

GOHP ASD

Ln	Order Quant	EDP Code / Description	Net Price	UM	Ext Price
1	1	203784			
		0409ET3E365T-W22 AWG 40HP MOTO	7792.738	EA	7792.74
2		STOCK HOUSTON			

Quotation Total: \$7,792.74



A BRAND OF THE  
NIDEC MOTOR CORPORATION

MotorBoss Contact Us About Nidec Motor Corporation

Find a Distributor Online Catalog/Cross Reference Chat Support

OUR PRODUCTS INDUSTRY APPLICATIONS SERVICE & SUPPORT ENERGY EFFICIENCY ABOUT US

HOME / ONLINE CATALOG/CROSS REFERENCE

## Product Page

[Return to Results](#)

[Return to Search](#)

## Additional Resources

[DISTRIBUTORS/SERVICE CENTERS](#)

[CATALOGS AND LITERATURE](#)



General Purpose  
Three Phase, Totally Enclosed Fan Cooled (TEFC)  
Hostile Duty®  
Premium Efficient

List Price: \$9873.42  
Discount Symbol: DS-3HD  
Weight: 840 lbs  
[Catalog Page \(PDF\)](#)

Catalog Number: N3DE4E Model: DM4E			
Hp: 40	Phase: 3	Volts: 230/460 HZ: 60	
RPM: 890	Amps: 105/52		
Insul Class: F	SF: 1.15	SFA: 119/60	
Max Ambient: 40	NEMA Frame: 365T	Encl: TE	Code: F
Shaft End Bearing: 6313-2Z-J/C3	Opp End Bearing: 6313-2Z-J/C3		
NEMA Nom Eff: 92.4	Thermally Protected: N/A	Type: FCT	

Technical Data	
Cover Letter	
Dimension Print	
NamePlate Data	
Performance Data	
Renewal Parts	
Wiring Diagram	
VFD Suitability	
Installation & Maintenance Manual	
Curves	
3D Model	
Build Data Package	

Motor Specifications	
Electrical	
Break Down Torque	222 PERCENT OF FLT
Locked Rotor Torque	132 PERCENT OF FLT
Locked Rotor Amps	290.5
Mechanical	
Mounting	HORZ-FOOTED

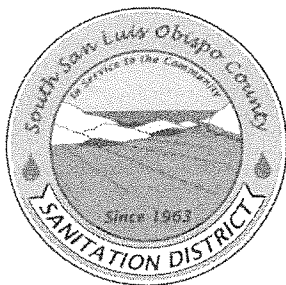
[Return to Results](#)

[Return to Search](#)

The motor shown is representative of the product family and not specifically the individual rating.  
© 2010 Nidec Motor Corporation. All rights reserved. [Terms and Conditions of Use](#)

© 2011 Nidec Motor Corporation. All rights reserved.  
A Nidec Group Company.

Home Terms of Use Sitemap Contact Us RSS  
[Visit our other brand websites](#)



# SOUTH SAN LUIS OBISPO COUNTY SANITATION DISTRICT

Post Office Box 339 Oceano, California 93475-0339

1600 Aloha Oceano, California 93445-9735

Telephone (805) 489-6666 FAX (805) 489-2765

<http://sslocsd.org/>

## Staff Report

**To:** Board of Directors  
**From:** Bob Barlogio, Plant Superintendent  
**Via:** John Wallace, District Administrator  
**Date:** August 1, 2012  
**Subject:** Influent Pump Parts

### Recommendation:

Staff recommends the Board approval of the purchase a stuffing box and Chesterton seal for the amount of **\$7,456.54** from ABBA Pump Parts.

### Funding:

Funding will from 26-8065, 11MBI 08, Influent Pumps Refurbishment. This account started with \$437,300 for fiscal year 2011/12. If the electric motor was approved, we would have \$ 431,043 remaining in this account. If this purchase is approved, this account will have \$ 423,586 remaining.

### Discussion:

The stuffing box is worn beyond repair. To complete this pump rebuild, we will need to replace the stuffing box and replace the mechanical seal. ABBA is a dealer in Canada that is an After-Market Part supplier.

I would like to get this order in as the wait time is 4-5 weeks. Staff would like to get this pump installed early this fall.

ABBA Pump Parts	Stuffing box \$2,274.00
	Chesterton seal \$ 4,492.00
	Total for the two items = \$6,766.00 plus tax and shipping

Flo-Systems	\$5,588.00 just for the stuffing box,
	I do not have a quote on the Chesterton seal from Flo-Systems,
	The last time they quoted a price (over 6 months ago) it was around \$5,000.00



**ABBA PUMP PARTS & SERVICE**  
www.abbaparts.com

## Parts Quotation

Customer: SOUTH SAN LUIS OBISPO COUNTY  
Contact: Bob Barlogio  
E-Mail: bob@sslocsd.us  
Reference: \_\_\_\_\_

Date: July 26, 2012  
Quote Number: S-FMAP-20495  
ABBA Job #:                       
Customer Order#:                       
Order Date:                       
Phone: 805-489-666  
Fax: -

### Genuine ABBA Performance™ + Parts to Fit:

Make: <u>Fairbanks Morse</u>	Serial #/Year: <u>K3X1-071431</u>
Size/Model: <u>12" B5721</u>	Power Frame #: <u>T40</u>
Capacity: <u>3,500</u> GPM	Rotation: <u>CW</u> When Viewed From Driver End
Head: <u>27</u> Feet	Wear Rings: <u>Yes (Radial)</u>
Speed: <u>880</u> RPM	Stuffing Box: <u>Chesterton</u>
Imp Dia.: <u>(13.55)</u> Inches	Motor: <u>                    </u> HP: <u>                    </u> Frame: <u>                    </u>

\*\*\* Please Confirm When Placing Order

QTY	Part #/Name	Material	ABBA #	OEM #	Net Price (Each)
1	Stuffing box cover	Cast iron	FMT-4034-1011_		\$2,274.00
1	Chesterton split , single mechanical seal: 3.0" 442-24 SA, Silicon Carbide (rotary) / Silicon Carbide (stationary), FKM Elastomers, 316 St. St. Metallurgy.				\$4,492.00
1	Option for Chesterton split, single mechanical seal: 3.0" 442-24 SA, Silicon Carbide (rotary) / <u>Carbon Stationary</u> , FKM Elastomers, 316 St. St. TOTAL NET PRICE .....				\$3,964.00

Freight: EXTRA  
Taxes: Extra if Applicable  
Price Valid For 30 Days

Shipment: 4 to 5 weeks  
Terms: Per APS-Schedule C - (see attached)  
FOB: Burlington, Ont., Canada

**Payment Terms: Net 30 Days (O.A.C.). We also accept Visa & MasterCard** (a 3% charge will be applied)

Quoted by: Trevor Allen  
trevor\_a@abbaparts.ca

**5370 Munro Court - Burlington, Ontario, Canada - L7L 5N8 - Tel: 905.333.2720 1.800.268.5142 Fax: 905.333.0973**

Replacement pumps, parts, & assemblies for major brand pumps used in Municipal water and wastewater applications, particularly  
Allis Chalmers & Fairbanks Morse

American Wellwork • Aurora • Chicago • Clow/Yeomans • Cornell • Crane Deming • De Laval • Gorman Rupp • Goulds • Marlow • Mather & Pratt • Morris  
• Paco • Patterson • Smart Turner • Smith & Loveless • Wemco • Worthington (Flowserve IDP)

NOTE: ALL OEM NAMES, NUMBERS, SYMBOLS & DESCRIPTIONS ARE FOR REFERENCE PURPOSES ONLY. IT IS NOT IMPLIED THAT ANY PART LISTED IS THE  
PRODUCT OF THE OEM.

ABBA PARTS & SERVICE IS NOT A DISTRIBUTOR OF, AGENT FOR, NOR AFFILIATED IN ANY WAY WITH A REFERENCED OEM.

Bob

Fairbanks has sent back the following information on this rebuild.

They are recommending getting a new back head for the pump (please see photo) The stuffing box area and casting are poor shape.

The additional cost for the new back head is \$ 5,588.00

Delivery is 10 to 11 weeks from release into production.

Pricing does not include any applicable sales tax.

Please advise on how to proceed. Thank you,

Flo-Systems, Inc

Rick Jesmok

818-641-4461 cell

818-562-5282 fax 818-842-3217 office

818-790-1222 home office and fax