



**SOUTH SAN LUIS OBISPO COUNTY  
SANITATION DISTRICT**

Post Office Box 339, Oceano, California 93475-0339

1600 Aloha, Oceano, California 93445-9735

Telephone (805) 489-6666 FAX (805) 489-2765

[www.sslocsd.us](http://www.sslocsd.us)

**AGENDA**

**BOARD OF DIRECTORS MEETING**

**Oceano Community Services District Board Room**

**1655 Front Street,**

**Oceano, CA 93445**

**Wednesday, August 7, 2019, at 6:00 p.m.**

**Board Members**

Jeff Lee, Chair

Caren Ray Russom, Vice Chair

Linda Austin, Director

**Agencies**

City of Grover Beach

City of Arroyo Grande

Oceano Community Services District

**Alternate Board Members**

Barbara Nicolls, Director

Lan George, Director

Cynthia Replogle, Director

City of Grover Beach

City of Arroyo Grande

Oceano Community Services District

- 
- 1. CALL TO ORDER AND ROLL CALL**
  - 2. PLEDGE OF ALLEGIANCE**
  - 3. AGENDA REVIEW**
  - 4. PUBLIC COMMENTS ON ITEMS NOT APPEARING ON AGENDA**

This public comment period is an invitation to members of the community to present comments, thoughts or suggestions on matters not scheduled on this agenda. Comments should be limited to those matters which are within the jurisdiction of the District. The Brown Act restricts the Board from taking formal action on matters not published on the agenda. In response to your comments, the Chair or presiding Board Member may:

- Direct Staff to assist or coordinate with you.
- Direct Staff to place your issue or matter on a future Board meeting agenda.

Please adhere to the following procedures when addressing the Board:

- Comments should be limited to three (3) minutes or less.
- Your comments should be directed to the Board as a whole and not directed to individual Board members.
- Slanderous, profane or personal remarks against any Board Member, Staff or member of the audience shall not be permitted

Any writing or document pertaining to an open-session item on this agenda which is distributed to a majority of the Board after the posting of this agenda will be available for public inspection at the time the subject writing or document is distributed. The writing or document will be available for public review in the offices of the Oceano CSD, a member agency located at 1655 Front Street, Oceano, California. Consistent with the Americans with Disabilities Act (ADA) and California Government Code §54954.2, requests for disability-related modification or accommodation,

including auxiliary aids or services, may be made by a person with a disability who requires modification or accommodation in order to participate at the above referenced public meeting by contacting the District Administrator or Bookkeeper/Secretary at (805) 481-6903. So that the District may address your request in a timely manner, please contact the District two business days in advance of the meeting.

**5. CONSENT AGENDA:**

The following routine items listed below are scheduled for consideration as a group. Each item is recommended for approval unless noted. Any member of the public who wishes to comment on any Consent Agenda item may do so at this time. Any Board Member may request that any item be withdrawn from the Consent Agenda to permit discussion or to change the recommended course of action. The Board may approve the remainder of the Consent Agenda on one motion.

**5A. Approval of Warrants**

**5B. Approval of Meeting Minutes of July 17, 2019**

**6. ACTION ITEMS:**

**6A. CENTRAL COAST BLUE PROJECT UPDATE; PRESENTATION BY WATER SYSTEM CONSULTING, DAN HEIMEL**

Recommendation: That the Board receive a presentation on Central Coast Blue (formerly referred to as Regional Groundwater Sustainability Project) by Water Systems Consulting, Dan Heibel.

**6B. DRAFT COMMUNITY WORKFORCE AGREEMENT (CWA) FOR WASTEWATER TREATMENT PLANT REDUNDANCY PROJECT (UPDATE0**

Recommendation: Receive update and provide direction to staff.

**6C. COST OF LIVING ADJUSTMENTS AND BENEFITS FOR NON-REPRESENTED EMPLOYEES**

Recommendation: Adopt Resolution No. 2019-408, granting Cost of Living Adjustments and Modifications to Benefits for Non-Represented Full-Time Employees.

**6D. CONTRACT FOR PRIMARY CLARIFIER NO. 2 REHABILITATION AND CONTROL VALVE REPLACEMENT PROJECT PROFESSIONAL ENGINEERING SERVICES WITH CANNON CORPORATION**

Recommendation: Authorize the District Administrator to execute a contract for Professional Engineering Services with Cannon Corporation, in the amount of \$43,240.

**6E. DISTRICT ADMINISTRATOR AND PLANT OPERATIONS REPORT**

Recommendation: Receive and File.

7. MISCELLANEOUS ITEMS:
8. BOARD MEMBER COMMUNICATIONS:
9. ADJOURNMENT

The next regularly scheduled Board Meeting on September 04, 2019, 6:00 pm at the  
Oceano Community Services District Board Room,  
1655 Front Street, Oceano, California 93445

This page left intentionally blank.



SOUTH SAN LUIS OBISPO COUNTY SANITATION DISTRICT  
WARRANT REGISTER  
8/7/2019

VENDOR	BUDGET LINE ITEM	DETAIL	WARRANT NO	ACCT	ACCT BRKDN	TOTAL
AGP VIDEO	PROFES. SERV AGP VIDEO	JUNE	071219-3901	7080	885.00	885.00
ALLIED ADMINISTRATORS	DENTAL	AUGUST	3902	6025	720.77	720.77
ARAMARK	UNIFORMS	06/28; 07/05; 07/12	3903	7025	742.94	742.94
BANK OF THE WEST	COMPUTER SUPPORT	JUNE	3904	7025	74.25	74.25
BRENNTAG	PLANT CHEMICALS	BPI956628	3905	8050	6,383.01	6,383.01
CALIFORNIA ELECTRIC SUPPLY	EQUIPMENT MAINTENANCE	929272; 785634	3906	7062	340.90	340.90
CAREN RAY RUSSOM	BOARD SERVICE	JUNE	3907	7075	100.00	100.00
CHARTER	COMMUNICATIONS	06/29/19-07/28/19	3908	7013	299.95	299.95
CITY OF GROVER BEACH	BILLING	MAY	3909	7081	1,954.75	1,954.75
COASTAL ROLL OFF	RUBBISH	JUNE	3910	7093	707.54	707.54
CCWT	EQUIPMENT RENTAL	57074	3911	7032	190.00	190.00
DE JESUS GARDENING	STRUCTURE MAINTENANCE	JULY	3912	8060	450.00	450.00
ENDRESS HOUSER	STRUC/GROUNDS REPLACE	DISINFECTION	3913	26-8065	18,595.89	18,595.89
ENGEL & GRAY	SOLIDS HANDLING	JUNE	3914	7085	4,630.58	4,630.58
ERIKA FROST	BOOT ALLOWANCE	FY 19/20	3915	7025	250.00	250.00
EVERYWHERE RIGHT NOW	COMPUTER SUPPORT	JULY	3916	7082	100.00	100.00
FARM SUPPLY	EQUIPMENT MAINTENANCE	172441	3917	8030	340.65	340.65
FGL ENVIRONMENTAL	CHEMICAL ANALYSIS	981293A	3918	7078	8,018.00	8,018.00
FLUID RESOURCE MNGMT	EQUIPMENT MAINTENANCE	W18236	3919	8030	995.00	995.00
GILBERT TRUJILLO	LEGAL COUNSEL	MAY AND JUNE	3920	7071	7,640.10	7,640.10
JAN PRO	STRUCTURE MAINTENANCE	JULY	3921	8060	260.00	260.00
JB DEWAR	FUEL	910709	3922	8020	34.74	34.74
JEFF LEE	BOARD SERVICE	JUNE	3923	7075	100.00	100.00
JONES & MAYER	LEGAL COUNSEL	JUNE	3924	7071	999.00	999.00
LINDA AUSTIN	BOARD SERVICE	JUNE	3925	7075	100.00	100.00
MARIO DE LEON	BOOT ALLOWANCE	FY 19/20	3926	7025	250.00	250.00
MICHAEL ARIAS	BOOT ALLOWANCE	FY 19/20	3927	7025	250.00	250.00
MKN	REDUNDANCY ADMINISTRATION	5641	3928	20-8010	5,832.15	8,968.50
	WW PRETREATMENT PROGRAM	5642		19-8015	3,136.35	
MINERS	EQUIPMENT MAINTENANCE	JUNE	3929	8030	318.92	318.92
MIDSTATE INSTRUMENTS	CHEMICAL ANALYSIS	MSI9128	3930	7078	222.93	222.93
OILFIELED	CHEMICAL ANALYSIS	1902730	3931	7078	85.00	85.00
POLYDYNE	PLANT CHEMICALS	1364524	3932	8050	6,331.65	6,331.65
POOR RICHARDS PRESS	OFFICE SUPPLY'S	287972	3933	8045	123.08	123.08
PRAXAIR	EQUIPMENT RENTAL	05/20/19-06/20/19	3934	7032	31.85	31.85
READY REFRESH	HOUSEHOLD EXPENSE	05/25/19-06/24/19	3935	8035	223.92	223.92
REGIONAL GOVT. SERVICE	RECRUITMENT	OPERATOR IN TRAINING	3936	7076	6,893.90	6,893.90
ROYAL WHOLESALE ELECT.	STRUC/GROUNDS REPLACE	DISINFECTION PROJECT	3937	26-8065	7,433.83	7,433.83
SAFETY KLEEN	FUEL	80068440	3938	8020	413.30	413.30
SANTA MARIA FAMCON PIPE	EQUIPMENT MAINTENANCE	S1000006611.001	3939	8030	25.01	25.01
SDRMA	LIABILITY INSURANCE	FY 19/20	3940	7043	196.75	196.75
SO CAL GAS	GAS	05/31/19-07/01/19	3941	7092	2,273.99	2,273.99
SO CO SANITARY	RUBBISH	JULY	3942	7093	366.94	366.94
SPRINT	TELEPHONES	06/04/19-07/03/19	3943	7014	95.01	95.01
STANLEY	ALARMS	16664623	3944	7011	71.28	71.28
STATE FUND COMPENSATION	WORK COMP INSURANCE	FY 19/20	3945	6080	1,721.14	1,721.14
THE TRIBUNE	ADVERTISING	PUBLIC HEARING	3946	7005	152.46	152.46
UMPQUA BANK	EQUIPMENT MAINTENANCE	JUNE	3947	8030	33.29	1,431.78
	HOUSEHOLD EXPENSE	JUNE		8045	140.06	
	OFFICE SUPPLIES	JUNE		8045	10.48	
	TRAINING	JUNE		7067	1092.55	
	COMPUTER SUPPORT	JUNE		7082	155.4	
VWR	LAB SUPPLIES	2019-137	3948	8040	257.60	257.60
WILLIAM JACKMAN	BOOT ALLOWANCE	FY 19/20	3949	7025	250.00	250.00
WILLIAM ROMHILD	BOOT ALLOWANCE	FY 19/20	3950	7025	250.00	250.00
AT&T	TELEPHONES	07/11/19-08/10/19	071919-3951	7013	196.98	196.98
CULLIGAN CCWT		JULY	3952	7032	60.00	60.00
I.I. SUPPLY	EQUIPMENT MAINTENANCE	60543; 61859	3953	8030	456.63	456.63
OILFIELD ENV. COMPLIANCE	CHEMICAL ANALYSIS	1093055	3954	7078	130.00	130.00
PG&E	ELECTRIC	06/11/19-07/10/19	9355	7091	17,932.84	17,932.84
REGIONAL GOVT. SERVICES	ADVERTISING/LEGAL/RECRUITMENT	OPERATOR IN TRAINING	3956	7005	660.00	660.00
ROYAL WHOLESALE	EQUIPMENT MAINTENANCE	ELECTRICAL	3957	8030	142.44	142.44

SOUTH SAN LUIS OBISPO COUNTY SANITATION DISTRICT  
WARRANT REGISTER  
8/7/2019

VENDOR	BUDGET LINE ITEM	DETAIL	WARRANT NO.	ACCT	ACCT BRKDN	TOTAL
AIRFLOW FILTER SERVICE	BOILER	59470	073119-3958	8030	141.63	141.63
AMERICAN BUSINESS MACHINES	OFFICE SUPPLIES	04/11/19-07/10/19	3959	8045	222.48	222.48
ARAMARK	EMPLOYEE UNIFORMS	07/19/19; 07/26/19	3960	7025	449.86	449.86
BRENNTAG	PLANT CHEMICALS	BP1962678	3961	8050	10,864.29	10,864.29
CAREN RAY RUSSOM	BOARD SERVICE	JULY	3962	7075	100.00	100.00
CARQUEST	AUTOMOTIVE	1091926	3963	8032	38.73	38.73
CARRIE TROUP, CPA	FISCAL SERVICES	MARCH THRU JUNE	3964	7083	4,189.50	4,189.50
CENTRAL COAST TECH	COMPUTER SUPPORT	JULY	3965	7082	493.43	493.43
CITY OF ARROYO GRANDE	BILLING SERVICES	APRIL THRU JUNE	3966	7073	5,674.00	5,674.00
CITY OF GROVER BEACH	BILLING SERVICES	JUNE	3967	7081	1,933.00	1,933.00
CS AMSCO	EQUIPMENT MAINTENANCE	14955	3968	8030	5,224.39	5,224.39
EVERYWHERE RIGHT NOW	COMPUTER SUPPORT	AUGUST	3969	7082	100.00	100.00
FARM SUPPLY	EQUIPMENT MAINTENANCE	67095; 67237	3970	8030	84.27	84.27
HAULAWAY	EQUIPMENT RENTAL	06/13/19-07/10/19	3971	7032	93.80	93.80
II SUPPLY	SAFETY SUPPLY'S	62784	3972	8056	88.25	88.25
JAN PRO CLEANING	STRUCTURE MAINTENANCE	AUGUST	3973	8060	260.00	260.00
JEFF LEE	BOARD SERVICE	JULY	3974	7075	100.00	100.00
JOHNSON'S BOILER	EQUIPMENT MAINTENANCE	14168	3975	8030	1,347.50	1,347.50
KENNEDY JENKS	REDUNDANCY	131728	3976	20-7080	226.60	226.60
LARA HR SERVICES	HUMAN RESOURCES	JUNE	3977	7076	310.00	310.00
PRAXAIR	EQUIPMENT RENTAL	06/20/19-07/20/19	3978	7032	31.20	31.20
READY REFRESH	HOUSEHOLD EXPENSE	06/25/19-07/24/19	3979	8035	110.03	110.03
SANTA MARIA FAMCON PIPE	EQUIPMENT MAINTENANCE	BOILER	3980	8030	158.73	158.73
STATE FUND INSURANCE	WORK COMP INSURANCE	AUGUST	3981	6080	1,706.33	1,706.33
TENERA ENVIRONMENTAL	OCEAN OUTFALL	TASK 1	3982	7060	425.87	425.87
UNDERGROUND SERVICE ALERT	MEMBERSHIPS	0700252019	3983	7050	972.34	972.34
VWR SCIENTIST	LAB SUPPLY'S	PO 2019-141	3984	8040	287.69	287.69
WILLIAM ROMHILD	MEDICAL REIMBURSEMENT	FY 18/19 AND 19/20	3985	6075	680.94	680.94
<b>SUB TOTAL</b>					<b>\$ 149,445.66</b>	<b>\$ 149,445.66</b>
SSLOCSD	JUNE TRANSFER	PAYROLL	073119-3986		55,898.23	78,122.47
		RETIREMENT			7,621.74	
		MEDICAL			14,602.50	
<b>SUB TOTAL</b>					<b>\$ 78,122.47</b>	<b>\$ 78,122.47</b>
<b>GRAND TOTAL</b>					<b>\$ 227,568.13</b>	<b>\$ 227,568.13</b>

We hereby certify that the demands numbered serially from 071219-3901 to 073119-3986 together with the supporting evidence have been examined, and that they comply with the requirements of the SOUTH SAN LUIS OBISPO COUNTY SANITATION DISTRICT. The demands are hereby approved by motion of the SOUTH SAN LUIS OBISPO COUNTY SANITATION DISTRICT, together with warrants authorizing and ordering the issuance of checks numbered identically with the particular demands and warrants.

BOARD OF DIRECTORS:

DATE: \_\_\_\_\_

\_\_\_\_\_  
Chairman

\_\_\_\_\_  
Board Member

\_\_\_\_\_  
Board Member

\_\_\_\_\_  
Secretary



# **SOUTH SAN LUIS OBISPO COUNTY SANITATION DISTRICT**

Post Office Box 339, Oceano, California 93475-0339  
1600 Aloha, Oceano, California 93445-9735  
Telephone (805) 489-6666 FAX (805) 489-2765  
[www.sslocsd.org](http://www.sslocsd.org)

## **SUMMARY ACTION MINUTES Regular Meeting of Wednesday, July 17, 2019**

---

### **1. CALL TO ORDER AND ROLL CALL**

Chair Lee called the meeting to order and recognized a quorum.

Present: Jeff Lee, Chair, City of Grover Beach  
Caren Ray Russom, Vice Chair, City of Arroyo Grande  
Linda Austin, Director, Oceano Community Services District

District Staff: Jeremy Ghent, District Administrator;  
Keith Collins, Legal Counsel,  
Mychal Jones, Plant Superintendent  
Amy Simpson, District Bookkeeper/Secretary

### **2. PLEDGE OF ALLEGIANCE**

Legal Counsel Keith Collins led the Pledge of Allegiance.

### **3. AGENDA REVIEW**

Approved as presented.

### **4. PUBLIC COMMENTS ON ITEMS NOT APPEARING ON AGENDA**

There was no public Comment.

### **5. CONSENT AGENDA:**

**5A. Approval of Warrants**

**5B. Approval of Meeting Minutes of June 5, 2019**

Public Comment was opened. Julie Tacker commented on the Pismo Beach Central Coast Blue expenditure; and Item 6B. paragraph eight of the Minutes. Chair Lee closed Public Comment.

The Board amended the Minutes. Item 6B. paragraph eight (8) will now read, "The Board took a five-minute break to allow staff to confer with representatives of the trades regarding discussion agreement on indemnification language and to receive core employee documentation so that the Board may continue discussion."

Administrator Ghent responded to Public Comment and said the District had pledged a little over \$112,000 to the City of Pismo Beach in support of the Environmental Impact Report (EIR) in a previous fiscal year. The project team of Central Coast will be giving an update on the current status of Central Coast Blue soon.

**Motion:** Vice Chair Ray Russom moved to approve the Consent Agenda with amendment to Item 6B. in the Minutes.

**Second:** Director Austin

**Action:** Approved unanimously by voice vote.

## **6. ACTION ITEMS:**

### **6A. PLANT OPERATIONS REPORT**

Superintendent Jones presented the Plant Operations Report. He reported that the plant continued to meet its NPDES permit limitations. He said two proposals have been received for the Primary Clarifier No. 2 Rehabilitation and Control Box Valve Replacement Project. Also, the District received an Air Pollution Control District (APCD) Mutual Settlement for the violation due to venting of digester gas and not notifying APCD within four hours in the amount of \$1,000. In addition, the District will submit for APCD approval, a written operation and maintenance plan that describes the processes taken to ensure proper operation of the manual and automatic digester gas valves. He also reported that eighteen potential candidates interviewed for the Operator in Training position. Five second interviews will be held tomorrow.

Public Comment was opened, Patricia Price commented on monthly plant data regarding fecal coliform numbers. Julie Tacker commented on lack of a District Administrators report and cost spent on the EIR. Public Comment was closed.

Superintendent Jones responded to the comments and said there are higher flows during summer due to tourism season and this is the cause for higher fecal numbers. This year numbers are well below previous year averages.

**Action:** The Board received and filed this report.

### **6B. ADOPTION OF RESOLUTION 2019-407 FOR COLLECTING FISCAL YEAR 2019-20 DISTRICT ANNUAL WASTEWATER TREATMENT CHARGES FROM THE COMMUNITY OF OCEANO THROUGH THE COUNTY PROPERTY TAX ROLL**

Recommendation: That the Board approve Resolution No. 2019-407 authorizing the transmittal of the report to the County to collect District wastewater treatment charges from the OCSD service area for Fiscal Year 2019-20 on the County Property Tax Roll.

Administrator Ghent presented this report. He provided the history and the original intent of the Board regarding agency billing. Currently only Oceano is on the tax roll and Grover Beach and Arroyo Grande place the billing on the city water bills.

There was direction to move forward and May 4, 2016 the Board directed staff to place the Community of Oceano charges onto the property tax roll and to continue using the city water bills for the billing of Arroyo Grande and Grover Beach. There has been no formal action of the Board to renegotiate the current arrangement. Current billing cost for NBS to place the Oceano parcels on the tax roll is \$10,000. This is an approximate \$12,000 savings to the District by utilizing the tax roll. There would be similar measure of savings in moving the other two agencies to the tax rolls. But there is more consideration to the move, because additional services are provided by the cities. Arroyo Grande and Grover Beach also aid in the collection of connection fees for new development. This is a service not provided by the Oceano Community Services District (OCSD). He reached out to the Manager of the OCSD and will continue to have discussion with all City Managers.

Public Comment was opened. Mary Lucey, Stella Lopez, Julie Tacker and Patricia Price all commented on this item. Public Comment was closed.

The Board had a brief discussion. Director Austin provided a history of agency billing. The Board is in favor of revisiting agency billing to make it an equal process for all three agencies.

Administrator Ghent encouraged the Board to adopt the Resolution presented tonight to not delay the revenue stream of approximately \$1.3 million dollars. He would like to have discussions with the City Managers regarding agency billing and return to the Board after with a recommendation.

**Motion:** Director Ray Russom moved to adopt Resolution No. 2019-407 authorizing the transmittal of the report to the County to collect District wastewater treatment charges from the OCSD service area for Fiscal Year 2019-20 on the County Property Tax Roll with the additional direction as discussed earlier about revisiting within the next four months after conference with the other City Managers and the Oceano Director.

**Second:** Director Austin

**Action:** Approved unanimously by roll call vote.

**6C. DRAFT COMMUNITY WORKFORCE AGREEMENT FOR WASTEWATER TREATMENT PLANT REDUNDANCY PROJECT**

**Recommendation:** Consider draft Community Workforce Agreement (CWA) for approval, receive and consider the update on potential impact of the CWA on the Request for Qualifications for Construction Management Services, and provide direction to staff.

Administrator Ghent announced that there has been correspondence received since publishing the Board Pack and that correspondence is available at the back of the room and on the District website. Prior to this report, the District had not received feedback from the construction managers. Some of the concerns of the construction management firms were regarding the way in which CM firms are selected. The way fringe benefits are paid under the CWA. Professional liability insurance and the Union Labor component.

Public Comment was opened. (Spelling of names are approximated) Kevin Dayton, Jim Bowley, Fred Potthast, Greg Chelini, Brenda Daniels, Cordella Perry submitted letter, Jennifer Pitcher, Mary Lucey and Rob Down all spoke in opposition of adopting the Community Workforce Agreement.

Martin Rodriguez, Autumn Brown, David Baldwin, Jesse Brooks, Scott Zimmerman, Tony Skinner, Eddie Pina, Richard Bell, Cherie Cabral, Tyler Schite, Ji Shin, Manly McNich, Doug Moulder and Andy Garcia all spoke in support of adopting the Community Workforce Agreement.

Julie Tacker commented on costs associated with the agreement. Public Comment was closed.

The Board took a five-minute recess and returned at 8 p.m.

The Board had a discussion and answered questions from public comment.

Ghent responded to the questions of the Board and commenters. He said all 18 trades have their own Master Labor Agreement (MLA) and are incorporated in the document by reference. Regarding the cost of the PLA, he said that this work effort has taken majority of his time for past several weeks. Legal bills are 10-15 thousand dollars as a result of the negotiations and internal labor is not tracked. Substantial work from contracted project manager MKN has occurred and the budget for unknown work will need to be increased. Regarding the redacted version of correspondence received by District, he said that the unredacted letters will be made available once the active solicitation for the CM contract is complete. He responded to questions regarding the previous contract and said the Design and Geotechnical team are under contract to inspect during construction since adoption of the design contract in 2016. Yeh and Associates would remove themselves from the project.

A couple letters were submitted indicating this agreement does not comply with Federal Regulations regarding the USDA funding. Legal counsel Collins did indicate that this is something to investigate. There is a provision in the agreement that if any of the funding sources are incompatible the PLA would be void.

Discussion ensued and the Board members voiced their thought process regarding forming a motion and vote.

**Motion:** Director Ray Russom upon consideration of information that has come in since last meeting, made a motion that the Board remove the PLA from the Construction Management portion of the contract.

**Second:** Chair Lee for purpose of discussion.

**Action:** Approved unanimously by voice vote.

There was no further discussion on this motion.

**Motion:** Director Ray Russom made a second motion to confirm that the Board is going forward with the agreement that has been negotiated on the construction side of the contract.

**Second:** Chair Lee

**Action:** Chair Lee and Director Ray Russom vote Yes. Director Austin voted no.

The Board had further discussion.

**7. MISCELLANEOUS ITEMS:**

The District did receive correspondence regarding Item 6C. and this correspondence has been provided tonight and on the District website.

**8. BOARD MEMBER COMMUNICATIONS**

None

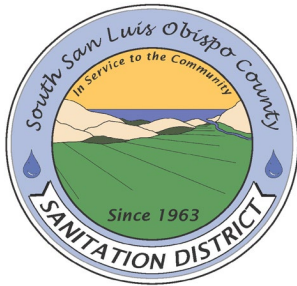
**9. ADJOURNMENT**

9:09pm

***THESE MINUTES ARE DRAFT AND NOT OFFICIAL UNTIL APPROVED BY THE BOARD OF DIRECTORS AT A SUBSEQUENT MEETING.***

This page left intentionally blank.





## **SOUTH SAN LUIS OBISPO COUNTY SANITATION DISTRICT**

Post Office Box 339, Oceano, California 93475-0339  
1600 Aloha, Oceano, California 93445-9735  
Telephone (805) 489-6666 FAX (805) 489-2765  
[www.sslocsd.org](http://www.sslocsd.org)

---

### **STAFF REPORT**

**Date:** August 7, 2019  
**To:** Board of Directors  
**From:** Jeremy Ghent, District Administrator  
**Subject:** **CENTRAL COAST BLUE PROJECT UPDATE; PRESENTATION BY  
WATER SYSTEM CONSULTING, DAN HEIMEL**

#### **RECOMMENDATION:**

That the Board receives a presentation on Central Coast Blue (formerly referred to as Regional Groundwater Sustainability Project) by Water Systems Consulting, Dan Heimerl.

#### **BACKGROUND:**

Central Coast Blue is a project to reclaim wastewater from the City of Pismo Beach and the South San Luis Obispo County Sanitation District and inject the reclaimed water into the Northern Cities Management Area of the Santa Maria Groundwater Basin to create a barrier to salt water intrusion and a sustainable groundwater supply for the Five Cities area.

In 2015, the District, utilizing a \$75,000 Water Facilities Planning Grant from the State Water Resources Control Board (SWRCB) and a partnership with the City of Arroyo Grande for the \$75,000 local match, contracted with Water Systems Consulting (WSC) to prepare a study to evaluate the possibility of reclaiming wastewater in the Five Cities area and evaluating possible methods to reuse the reclaimed water. The report was completed in the early part of 2017.

At the Board meeting of June 7, 2017, the Board unanimously agreed to enter into a Memorandum of Agreement with the City of Pismo Beach to prepare an Environmental Impact Report (EIR) in support of the Regional Groundwater Sustainability Project, now Central Coast Blue. In the agreement the District agreed to fund fifty percent (50%) of the cost of the EIR up to a maximum District share of \$127,500, to date the City of Pismo has billed the District \$25,722.

At its meeting of November 15, 2017, the Board considered Technical Memorandum 7 (TM-7) for the Redundancy Project. TM-7 evaluated the inclusion of a Membrane Bioreactor (MBR) in the Redundancy Project. The MBR would have provided the plant the ability to produce a much higher quality discharge to help reduce the cost of processing reclaimed water. The estimated cost to the District for inclusion of the MBR was \$16 million. The Board chose **not** to include the MBR option as part of the Redundancy Project. At the Board meeting the Board directed staff to evaluate possible alternatives to support Central Coast Blue. As a result, the Redundancy Project provides the ability to construct an additional aeration chamber at a later date that would provide nitrate removal to the waste stream. The pre-removal of this nutrient is necessary to more effectively process the water through reverse osmosis.

At the Board meeting of May 2, 2018, the Board received a presentation and project status update from the City of Pismo Beach Public Works Director, Ben Fine.

**DISCUSSION:**

Since the May 2, 2018 Board meeting, there has been substantial advancements in project understanding due to completion of the Ground Water Model. Central Coast Blue Project Manager, Dan Heimel, from Water Systems Consulting Inc., will provide an update to Central Coast Blue at tonight's meeting.



## SOUTH SAN LUIS OBISPO COUNTY SANITATION DISTRICT

Post Office Box 339 Oceano, California 93475-0339

1600 Aloha Oceano, California 93445-9735

Telephone (805) 489-6666 FAX (805) 489-2765

www.sslocsd.org

---

### Staff Report

**To:** Board of Directors

**From:** Jeremy Ghent, District Administrator

**Date:** August 7, 2019

**Subject:** DRAFT COMMUNITY WORKFORCE AGREEMENT (CWA) FOR  
WASTEWATER TREATMENT PLANT REDUNDANCY PROJECT (UPDATE)

### RECOMMENDATION:

Receive update and provide direction to staff.

### BACKGROUND:

At the July 17th, 2019 District Board meeting staff was directed to pursue a revised CWA for implementing construction of the Redundancy Project. Staff was directed to remove the draft language that subjects Construction Management Inspectors to the CWA.

### DISCUSSION

On July 24<sup>th</sup> District Counsel returned the below highlighted edit. Staff requested concurrence from the trades consultant and legal counsel on the edit and has received no response.

3.3.4 All employees of the District, Community Workforce Coordinator, design teams (including, but not limited to, architects engineers and master planners), or any other consultants for the District (including, but not limited to, Project Managers and Construction Managers and their employees not engaged in Project Work) and their sub-consultants, and other employees of professional service organizations, are deemed not to be performing manual labor within the scope of this Agreement; ~~provided, however, that it is understood and agreed that Building/Construction Inspector and Field Soils and Materials Testers (Inspectors) are a covered craft under this CWA. This inclusion applies to the scope of work defined in the State of California Wage Determination for said Craft. This shall also specifically include such work where it is referred to by utilization of such terms as "quality control" or "quality assurance." Every Inspector performing under the Wage classification of Building/Construction Inspector and Field Soils and Material Testers under a professional services agreement of a construction contract shall be bound to all applicable requirements of the CWA. Should an existing Building/Construction Inspection, Field Soils and Material~~

Testing or Survey Professional Services contract expire and/or a new Professional Services contract is awarded said contract shall be bound to this CWA for its duration. Project Work as defined by this Agreement shall be performed pursuant to the terms and conditions of this Agreement regardless of the manner in which the work was awarded;

**Fiscal Considerations:**

To date for the CWA in review and administrative efforts the District has expended approximately \$9,300 in Engineering Services, \$17,500 in legal services and \$12,000 in District Staff time. For an estimated total of \$38,800

Kennedy Jenks has indicated that delayed bidding contributes approximately \$55,000 per month to project costs.

**Options:**

1. Direct staff to advance the project without the CWA in effect.
2. Provide other direction

**Attachments:**

1. None



SOUTH SAN LUIS OBISPO COUNTY  
SANITATION DISTRICT  
Post Office Box 339 Oceano, California 93475-0339  
1600 Aloha Oceano, California 93445-9735  
Telephone (805) 489-6666 FAX (805) 489-2765  
[www.sslocsd.org](http://www.sslocsd.org)

---

## STAFF REPORT

To: Board of Directors

From: Jeremy Ghent, District Administrator

Date: August 7, 2019

Subject: **COST OF LIVING ADJUSTMENTS AND BENEFITS FOR NON-REPRESENTED EMPLOYEES**

### **RECOMMENDATION:**

Adopt Resolution No. 2019-408, granting Cost of Living Adjustments and Modifications to Benefits for Non-Represented Full-time Employees.

### **BACKGROUND**

On November 15, 2017, the Board approved the first ever Memorandum of Understanding (MOU) for individuals in the non-exempt operator series classifications represented by the Service Employees' International Union (SEIU) Local 620. Within the MOU were provisions for salary COLA increases and changes in benefit provisions.

As such, there was a need to address compensation packages for Non-Represented employees. On December 6, 2017 the Board of Directors adopted Resolution 2017-381 and Exhibit A, granting cost of living adjustments and modifications to benefits for non-represented full-time employees.

There are three full-time District classifications covered in the attached resolution that are not represented by SEIU. Those classifications are the Wastewater Plant Superintendent, Bookkeeper/Secretary and Maintenance Assistant. The District Administrator is hired by contract in an executive capacity to the Board and is also not represented. The employment contract for the District Administrator is adopted by the Board as a separate open session item.

Per Resolution 2017-381, employer contributions toward health care premium coverage for active employees and future retirees were capped. The District and active employees share equally in any future annual increase in premiums.

Pursuant to the Public Employees' Medical and Hospital Care Act (PEMHCA), the District is mandated to provide an equal Minimum Employer Contribution (MEC) toward employee and retiree coverage, the amount of which is adjusted from time to time as determined by CalPERS. The total amount of the District contribution for prospective retirees covered by this resolution includes the Minimum Employer Contribution and an optional contribution to offset a portion of the monthly premium for single coverage; however, unlike with active employees, retirees have no provision for future increases.

### **DISCUSSION:**

The item before the Board this evening is a recommendation to authorize salary increases and benefit modifications for Non-Represented full-time employees. Below are highlights of the changes to compensation.

Salary: District employees in Non-Represented classifications as noted above, are recommended to receive salary increases of 2.5% of base salary in July 2019 and in July 2020.

Medical: The dollar allowance toward health premium costs (which includes the Minimum Employer Contribution for active employees as defined in Exhibit "A") is based on shared cost increases to Blue Shield Access+ from 2019 rates to 2020 rates. Employees are able to select the coverage of their choosing from three HMO and three PPO plans available in Region 2, which includes San Luis Obispo and Santa Barbara counties. With three of the six available options, the District contribution toward premiums will cover full premium costs. If an employee elects to be covered under one of the other three plans, they must pay the difference between the District's contribution and the full premium cost.

Life Insurance: Currently the District provides no life insurance for employees. The proposal before the Board this evening includes a \$25,000 life insurance policy for employee-only coverage. Most agencies in the local area and region provide some level of life insurance to their employees. This benefit comes with a nominal cost and aligns with the District's desire to stay competitive in the market.

Staff is recommending the Board adopt Resolution 2019-408 and attachment Exhibit "A", which define the compensation package for current employees in Non-Represented classifications.

### **Options:**

1. Adopt the attached resolution and exhibit defining the compensation package for employees in Non-Represented classifications.
2. Do not adopt the resolution.
3. Provide further direction to staff.

**Fiscal Considerations:**

The adopted Fiscal Year 2019/20 Budget has sufficient funds to cover the proposed cost of living adjustments and modification to benefits for non-represented full-time employees.

Attachment: Resolution No. 2019-408  
Exhibit "A" to Resolution No. 2019-408

## **RESOLUTION 2019-408**

### **A RESOLUTION OF THE BOARD OF SOUTH SAN LUIS OBISPO COUNTY SANITATION DISTRICT GRANTING COST OF LIVING ADJUSTMENTS AND MODIFICATIONS TO BENEFITS FOR NON- REPRESENTED FULL-TIME EMPLOYEES**

**WHEREAS**, the South San Luis Obispo County Sanitation District (District) desires to remain competitive in salary and benefits that it provides to its employees and to staff its plant in an effective and economical manner; and

**WHEREAS**, to remain competitive, from time to time the District provides cost of living adjustments and modifications to benefits; and

**NOW, THEREFORE, IT IS HEREBY RESOLVED**, that the Board of South San Luis Obispo County Sanitation District hereby approves the following:

1. Cost of Living Adjustments for employees in Non-Represented Full-time classifications as follows:
  - a. July 2019 – effective on the first day of the first full pay period in July 2019, a two and one-half percent (2.5%) Cost of Living Adjustment to base salary; and
  - b. July 2020 – effective on the first day of the first full pay period in July 2020, a two and one-half percent (2.5%) Cost of Living Adjustment to base salary; and
2. Adopt Exhibit “A” Contributions on Behalf of Non-Represented Employees for the period of July 1, 2019 to December 31, 2021.

The District Administrator, or his/her designee, is hereby authorized and directed to take all steps necessary to implement this resolution.



**PASSED AND ADOPTED** at a regular meeting of the South San Luis County Sanitation District Board of Directors held this 7th day of August 2019.

On the motion of \_\_\_\_\_ seconded by \_\_\_\_\_, and after the following roll call vote:

AYES:  
NOES:  
ABSENT:  
CONFLICTS:

\_\_\_\_\_  
Jeff Lee, Chair  
Board of Directors  
South San Luis Obispo County Sanitation District

ATTEST:

\_\_\_\_\_  
DISTRICT SECRETARY

APPROVED AS TO FORM:

BY: \_\_\_\_\_  
DISTRICT COUNSEL

CONTENTS:

BY: \_\_\_\_\_  
DISTRICT ADMINISTRATOR

**CONTRIBUTIONS ON BEHALF OF NON-REPRESENTED EMPLOYEES  
FOR THE PERIOD OF JULY 1, 2019 TO JUNE 30, 2021**

The below contributions are for employees in the following non-represented classifications:

Wastewater Plant Superintendent  
Bookkeeper/Secretary  
Maintenance Assistant

**MEDICAL (ACCOUNT 6010)**

For those employees electing medical coverage in the District's plans through CalPERS, the District shall make monthly premium contributions as defined below, for the District's medical plan for the employee and the employee's dependent coverage.

There shall be an open enrollment period once each year prior to the insurance policy anniversary date to allow for changes in coverage.

**A. Employer Contributions for Active Employee Healthcare Coverage**

Active employees who elect health coverage through the District shall participate in the District's full flex cafeteria plan in accordance with IRS Code Section 125. For active employees participating in the District's full flex plan, the District will contribute the Minimum Employer Contribution (MEC) as required by the Public Employees' Medical and Hospital Care Act (PEMHCA), per month per employee to be used solely toward medical premiums.

Active employees participating in the District's full flex cafeteria plan receive a monthly flex dollar allowance to purchase benefits under the full flex cafeteria plan. The monthly flex dollar allowance shall be a dollar amount equal to the amounts defined below, each of which include the PEMHCA minimum employer contribution, for Employee Only, and Employee plus One Dependent or an Employee plus Two or More Dependents. If the premium cost for medical coverage is less than the District's flex dollar contribution, the employee shall not receive any unused portion in the form of cash. The MEC is determined by CalPERS and subject to change on an annual calendar year basis.

1. District Flex Dollar Contributions Effective Upon Approval of This Exhibit  
The District's flex dollar allowance will be established on the below amounts for monthly health premiums. The amounts include the PEMHCA minimum employer contribution.

	Calendar Year 2019	Calendar Year 2020	Calendar Year 2021
Employee Only	\$ 778.45	\$ 853.37	TBD
Employee +1 Dependent	\$ 1,556.90	\$ 1,706.73	TBD
Employee +2 or More Dependents	\$ 2,023.97	\$ 2,218.75	TBD

**2. Cost Sharing for Rate Increases**

Each Plan Year premium increases to active employee health care shall be shared between the District and employees. The CalPERS Blue Shield Access+ plan shall be the base plan for calculating future cost sharing with the District and employees each contributing fifty percent (50%) of any calendar year increase in health care premiums. The District's fifty percent (50%) share shall be added to the above contribution amounts to coincide with the effective date of the increases.

Employees may enroll in any available medical plan of their choosing and are responsible for paying the difference (through payroll deduction) after the District's flex dollar contribution. Information on the new District flex dollar contribution maximum monthly amounts will be updated annually and made available to unit employees prior to each open enrollment period.

**B. Retiree Health Coverage**

Employees who retire from the California Public Employees' Retirement System (CalPERS) within 120 days of leaving their position with the District are eligible, as determined by CalPERS, to continue in the District's retiree group health insurance program, offered through the Public Employees' Medical and Hospital Care Act (PEMHCA).

The District will contribute the Minimum Employer Contribution (MEC) as required by the PEMHCA per month per retired annuitant to be used solely toward medical premiums for CalPERS medical plans under PEMHCA. For 2020 the MEC is \$139.00 per month, with future adjustments as determined by CalPERS from time to time.

The District shall provide an additional monthly dollar allowance toward the cost of medical premiums, to an eligible employee who retires with CalPERS within 120 days of leaving their position with the District, and as otherwise described herein; and who qualifies for and exercises their right through CalPERS to receive the District's retiree group health insurance. The additional dollar allowance, after deduction of the MEC, shall be reimbursed to the retiree (as noted below), which may be through a Trust established by the District.

**1. Employees Hired Prior to December 6, 2017**

Current employees hired by the District after January 1, 2013, and prior to December 6, 2017 are eligible as follows:

To receive a dollar allowance reimbursement for single coverage in addition to the PEMHCA minimum employer contribution, employees shall have been employed by the District for ten (10) continuous years of service at the time of retirement to be vested in this benefit, and must have retired within

## EXHIBIT "A" TO RESOLUTION 2019-408

120 days of separation from the District, and be otherwise eligible for retirement from the District. The District contribution toward the dollar allowance, when combined with the PEMHCA minimum employer contribution, shall be up to no more than fifty percent (50%) of the individual employee only premium at the time of retirement (50% of the individual employee only premium in the year in which the employee retires) and shall be capped with no increase prospectively.

Retired annuitants may only be reimbursed for out of pocket premium costs, up to the dollar allowance set at the time of retirement, after the deduction of the minimum employer contribution, which is paid directly to CalPERS. If the cost of the premium for the health plan selected, is less than the initial amount of dollar allowance at the time of retirement, due to benefit changes such as a different plan selection, then the dollar allowance shall be capped at the new lower amount, and shall not increase prospectively. Dependents and/or beneficiaries are not eligible for this benefit.

### C. Employees Hired After December 6, 2017

Any employees hired after December 6, 2017, shall not be eligible for an additional dollar allowance. The District shall contribute the PEMHCA minimum employer contribution toward the retired annuitant's coverage, the amount of which is determined by CalPERS and changes from time to time. For calendar year 2020 the minimum employer contribution amount is \$139.00. per month.

#### DENTAL (ACCOUNT 6025)

The District shall pay an amount equal to the current monthly premium for the District's dental plan for the employee and the employee's dependent coverage. 2019 rates are:

Employee only:	\$47.16
Employee plus 1 dependent:	\$94.33
Employee plus 2+ dependents:	\$145.93

#### LIFE INSURANCE (ACCOUNT 6025)

The District shall provide term life insurance for each non-represented employee in the amount of \$25,000.

#### VISION/DENTAL/MEDICAL TRUST (ACCOUNT 6075)

The District shall pay an initial amount of \$500 for each full-time employee and \$500 per fiscal year thereafter into a vision/dental/medical trust fund account. This account will reimburse out of pocket expenses not covered by an individual's vision/dental/medical plan into the next fiscal year. Funds remaining at the end of the fiscal year will carryover, not to exceed an amount equal to \$1,000. The District shall not make the full \$500 contribution to an individual's account balance to exceed \$1,000. The District shall only contribute an amount that brings the individual account balance to \$1,000 and shall only

## **EXHIBIT “A” TO RESOLUTION 2019-408**

make such contribution after the initial contribution of \$500 per fiscal year. No remaining unused benefit shall be paid to an employee upon termination or retirement.

### **SOCIAL SECURITY AND MEDICARE (ACCOUNT 6050)**

The District will make contributions for Social Security Tax at 6.2% and Medicare at 1.45% of gross payroll. The employee pays matching contributions.

### **STATE RETIREMENT (CalPERS) (ACCOUNT 6060)**

The District provides a retirement program for all eligible employees. The Retirement Program may be provided through contract with the California Public Employees Retirement System (CalPERS) as is currently provided and may be integrated with Federal Social Security Program, as is currently provided. Eligibility for CalPERS membership is determined by CalPERS. Contributions made by the District on behalf of employees, who are considered “new members” by CalPERS, shall be as mandated by the California Public Employees’ Pension Reform Act (PEPRA) of 2013.

### **STATE DISABILITY INSURANCE PROGRAM (ACCOUNT 6055)**

The District shall contribute 50% of the total cost for each employee to become part of the State Disability Insurance Program. Current contribution rate is 1.0% of gross payroll.

### **INCREASE FOR HIGHER OPERATOR GRADE (ACCOUNT 6030)**

A one-time increase of 2.5% for operator grade obtained above that required for position will be paid upon certification by the State of California for those non-represented individuals required to maintain an operator’s certificate. The salary increase of 2.5% shall only be paid for one operator grade obtained above that required for the position.

### **STIPEND FOR COMMERCIAL DRIVERS LICENSE (ACCOUNT 6030)**

The District shall pay a stipend of \$100 per month, in addition to other salary, to employees holding a valid Commercial Driver’s License (Class A) while occupying a District position requiring use of that license and designated by the District to utilize the related equipment.

### **STANDBY PAY (ACCOUNT 6030)**

See Personnel Policy Manual Section 3010 – Standby Policy and Pay

### **VACATION**

See Personnel Policy Manual Section 4000 – Vacation

### **SICK LEAVE**

See Personnel Policy Manual Section – 4020 Sick Leave

### **SICK LEAVE CONVERSION**

See Personnel Policy Manual Section – 4020 Sick Leave

### **SICK LEAVE PAYOUT UPON SEPARATION FROM EMPLOYMENT**

See Personnel Policy Manual Section – 4020 Sick Leave

**EMPLOYEE COMPUTER PURCHASE PROGRAM**

Provides for \$1,500.00 interest-free computer purchase loan, payable within two years from employee’s salary as a payroll deduction. In order to receive this loan, the employee is required to have passed probation and must enter into a repayment contract for District reimbursement.

**HOLIDAYS**

See Personnel Policy Manual Section 4010 – Holidays



## **SOUTH SAN LUIS OBISPO COUNTY SANITATION DISTRICT**

Post Office Box 339, Oceano, California 93475-0339  
1600 Aloha Oceano, California 93445-9735  
Telephone (805) 489-6666 FAX (805) 489-2765  
[www.sslocsd.org](http://www.sslocsd.org)

---

### **STAFF REPORT**

**Date:** August 7, 2019

**To:** Board of Directors

**From:** Jeremy Ghent, District Administrator

**Via:** Mychal Jones, Plant Superintendent

**Subject:** **CONTRACT FOR PRIMARY CLARIFIER NO. 2 REHABILITATION AND CONTROL VALVE REPLACEMENT PROJECT PROFESSIONAL ENGINEERING SERVICES WITH CANNON CORPORATION**

#### **RECOMMENDATION:**

Authorize the District Administrator to execute a contract for Professional Engineering Services with Cannon Corporation, in the amount of \$43,240.00.

#### **BACKGROUND AND DISCUSSION:**

The District's primary clarifier No. 2 was constructed in 1992. All the original equipment has remained on the clarifier since it was constructed and has reached or is coming to the end of its life span. In accordance with the District's capital improvement project list and in order to ensure continued safe operation, the District budgeted for the replacement of all the clarifier's major components. In addition, the District will replace the control box effluent valve to the primary no. 2 clarifier during the shutdown of the clarifier.

On June 3, 2019, The District issued a Request for Proposals for professional engineering services for the Primary Clarifier No. 2 Rehabilitation and Control Box Valve Replacement Project. The District is seeking to procure professional engineering services to assist with the following:

- Bid and oversee construction
- Provide engineer's opinion of probable construction cost
- Create a construction bid package that meets all District requirements for the project
- Provide plans and specifications which include bid forms, standard provisions and the like
- Prepare responses to bidder technical questions

- Assist in examining bids and determining the lowest responsive, responsible bidder
- Plan a preconstruction meeting with the District and contractor
- Provide contract support
- Provide inspection and administrative services including, but not limited to; material submittal approval, pay estimate preparation, change order oversight, inspection documentation, and final walkthrough and punch list during construction

Cannon Corporation and Michael K. Nunley & Associates, Inc. submitted proposals for District consideration. Both firms' proposals were evaluated based on criteria that consisted of understanding of the site and work to be done, experience with similar kinds of work, qualifications of staff and availability of Consultant, and demonstrated technical ability. After the review and evaluation of the proposals, the District has selected Cannon Corporation to provide Professional Engineering Services for the Primary Clarifier No. 2 Rehabilitation and Control Box Valve Replacement Project.

**Fiscal Considerations:**

A line item of \$295,000.00 was included in the Adopted Budget for Fiscal Year 2019/20, under Fund 26, Account No. 26-8065. Staff recommends that a portion of budgeted funds be used for the procurement of professional engineering services with Cannon Corporation with the remaining funds to be used for construction.

**Attachments:**

1. Cannon Corporation proposal





# South San Luis Obispo County Sanitation District

Proposal for Primary Clarifier No. 2  
Rehabilitation and Control Box Valve  
Replacement Project

**Cannon**  
Reliable Responsive Solutions

Mychal Jones, Plant Superintendent  
South San Luis Obispo County Sanitation District  
1600 Aloha Place/P.O. Box 339  
Oceano, CA 93475

July 8, 2019

**Subject: Proposal for Primary Clarifier No. 2 Rehabilitation and Control Box Valve Replacement Project**

Dear Mr. Jones:

The South San Luis Obispo County Sanitation District (District or SSLOCSD) Management and staff realize the importance of predictive and preventative maintenance to extend the useful life of its facilities. Planned repair and replacement of existing infrastructure allows for well-thought-out and safe construction activities in contrast to performing work in an emergency repair situation.

Critical upgrades for Fiscal Year (FY) 2019-2020 include the repair, rehabilitation, and coating of Primary Clarifier basin No. 2 and replacement of the control box valve. The control box valve will be furnished by the District. Both the Clarifier and the control valve will serve a critical role in the upcoming redundancy project flow splitting.

During the past 43 years, Cannon has provided engineering, design, survey, construction management, and landscape architecture services for multiple projects, including wastewater system/facility infrastructure improvements throughout Central Coast, Central San Joaquin Valley, and Southern California. Due to previous work with SSLOCSD, our team members have a keen understanding of this current project's background and location, and bring valuable experience with District requirements, policies, and procedures that will allow for the seamless coordination of engineering services with the District.

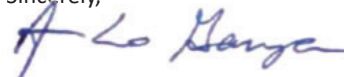
As Cannon's proposed Project Manager, Amando Garza brings direct experience working with numerous California municipalities on many previous wastewater infrastructure projects. In addition, Cannon has completed other projects similar in nature to the SSLOCSD Clarifier and valve replacements project, including wastewater treatment plant expansions for the Las Virgenes Municipal Water District, Cities of McFarland and Delano, and the design for the rehabilitation of the Buena Vista Aquatic Recreation Area Wastewater Treatment Plant in Kern County.

We are confident that our experience with these and other projects as well as our history working together on previous water infrastructure design, survey, and construction projects will improve the constructability of the District's current project. We have organized a comprehensive professional team to efficiently and reliably complete the scope of work outlined in the Request for Proposal.

Cannon has the staff, resume, and references to provide quality engineering and design services to the District, and is excited to aid in the successful completion of the Clarifier No. 2 rehabilitation and control valve replacement project. The following proposal demonstrates our experience and proposes a project team of key personnel we feel will best meet your needs.


I am available to answer any questions through the contact methods provided below, or to further discuss this proposal.

Sincerely,



Amando Garza, PE, BCEE C54148  
Senior Principal Civil Engineer  
1050 Southwood Drive, San Luis Obispo, CA 93401  
☎ 805.544.7407 📠 805.544.3863 ✉ AmandoG@CannonCorp.us

Amando Garza, PE, BCEE is Cannon's Project Manager authorized to negotiate a contract. Larry Kraemer, Cannon's secretary, is authorized to bind the firm with the District on behalf of the project team.

X   
Larry P. Kraemer, PE, Secretary

Primary Clarifier No. 2 Rehabilitation and Control Box Valve Replacement

**Cannon**



# Table of Contents

## **Section 1: Experience and References**

Firm Profile  
Relevant Project Experience and Client References

## **Section 2: Project Organization and Key Personnel**

Organizational Chart  
Key Personnel  
Firm QA/QC Process

## **Section 3: Project Understanding**

Understanding and Approach  
Key Considerations

## **Section 4: Proposed Scope of Work**

## **Section 5: Proposed Fee**

## **Section 6: Required Material**

Acknowledgment  
Exceptions  
Disqualifications  
Certificate of Professional Liability Insurance

## **Appendix:**

Resumes  
Sample Design Plans for Similar Projects

## Experience and References

As a full-service engineering, surveying, landscape architecture, and construction management firm, we take pride in our ability to offer clients a broad range of services. Our commitment to providing clients Reliable Responsive Solutions, whether the project scope is expansive or more specialized, spans 43 years. During that time, we have worked with many districts, cities, counties, and agencies throughout California to maintain secure and dependable water and wastewater systems, make streets safer and more pedestrian and bicycle-friendly, and construct buildings and facilities that are structurally sound.

These characteristics have been an integral part of the many water resource improvement projects we have completed throughout California. This experience gives us tremendous insight on the services required to accurately assess infrastructure upgrades for the South San Luis Obispo County Sanitation District's Primary Clarifier No. 2 Rehabilitation and Control Box Valve Replacement Project.

From our five office locations in San Luis Obispo, Los Angeles, Irvine, Ontario, and Bakersfield, Cannon's team of more than 130 professionals are available to begin work for the District immediately.

In addition to our project team members, Cannon is able to provide the following resources to the District:

- Registered Civil, Electrical, Structural, and Mechanical Engineers
- Licensed Land Surveyors and Survey Technicians
- Licensed Landscape Architects
- Caltrans Certified Construction Managers, Inspectors, and Resident Engineers
- Qualified Stormwater Practitioners and Developers (QSP/QSD)

### Project Manager

Amando Garza, PE, BCEE

1050 Southwood Drive, San Luis Obispo, CA 93401

☎ 661.616.6219 ✉ AmandoG@CannonCorp.us

📞 661.319.1678 🌐 CannonCorp.us



### Principal-in-Charge

Gary Roepke, PE

11900 West Olympic Boulevard, Los Angeles, CA 90064

☎ 310.382.5129 ✉ GaryR@CannonCorp.us

📞 310.633.0889 🌐 CannonCorp.us



### Experience Counts

Our team offers expertise in the following areas relevant to your project:



Wastewater Treatment



Process Piping Replacement



Control Valve and Instrumentation



Design and CM Services

Descriptions of our projects which incorporated these services is included in this section.

“Throughout our experience working with Cannon and Mr. Garza, we have found them to be reliable and responsive. They have continued to meet our expectations, project budgets, and dealines providing services related to the planning, design, and construction phases of our City's wastewater facilities.

- John Wooner, City Manager & Dennis McNamara, City Planner, City of McFarland



## Tapia Water Reclamation Facility Rehabilitation

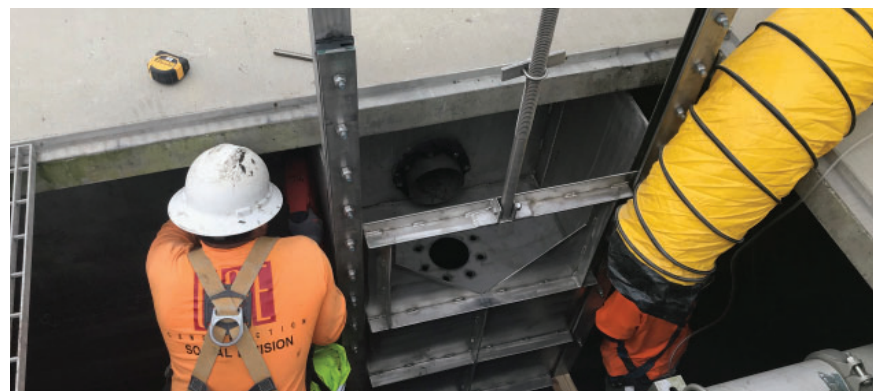
Calabasas, California



Tapia Water Reclamation Facility (WRF) is a 16 mgd wastewater treatment plant complete with Tertiary Treatment. The Tapia WRF was in need of rehabilitation of headworks grit piping, two primary clarifiers, primary scum piping replacement, and custom secondary effluent boxes with gates. Cannon was selected to complete the Tapia WRF Rehabilitation project for the Las Virgenes Municipal Water District (LVMWD) and Triunfo Sanitation District Joint Powers Authority (TSD).

LVMWD & TSD were in a multi-year proactive program for addressing the major predictive and preventative maintenance to extend the useful life of several major treatment units. Cannon completed the plans and specifications to the four part rehabilitation project. The projects included the following:

- Repair, rehabilitation, and coating of Primary Sedimentation Basins 4 and 5.
- Removal and replacement of existing skimmings and primary sludge piping from the primary sedimentation basins skimming trough to the “Muffin Monster” comminutors.
- Installation of new redundant grit solids feed piping from the grit pump dry-well to the northeast end of the existing cyclone feed header.



- Removal and replacement of 10 existing “Hydro-Gate” sluice gates and custom boxes in channel 4 (effluent channel from secondary clarifiers).

The rehabilitation project of the primary clarifier involved the final two clarifiers of the five existing. With recent completion of clarifier rehabilitation projects, the client project manager (PM) provided valuable input for inclusion in the specifications and plans. This input included development of the Sedimentation Basins 4 and 5 concrete rehabilitation to be completed in. Cannon worked closely with the LVMWD PM to develop necessary by-pass pumping for the scum piping. Cannon also provided the Engineering Services During Construction throughout the construction.

Construction efforts went according to plan with the exception of a schedule lapse from the Calabas/Malibu wildfires of November 2018. GSE was the prime contract and was effective in addressing issues prior to being an issue in construction.

### Client Contact/Project Reference

Eric Schlageter, PE, Associate Engineer, Las Virgenes Municipal Water District  
4232 Las Virgenes Road, Calabasas, CA 91302-1994  
☎ 818.251.2100 ✉ [ESchlageter@lvmwd.com](mailto:ESchlageter@lvmwd.com)

# Phase 1 Plant Upgrade

Santa Maria, California



As partners, Cannon and Carollo Engineers were selected to complete the planning and design efforts for the Laguna County Sanitation District (LCSD) Phase 1 wastewater treatment plant upgrade. Phase 1 plant upgrades consisted of designing a new headworks facility and activated sludge process for replacement of the existing Trickling Filter wastewater process. In the pursuit of replacing aging infrastructure and for design to provide denitrification, LCSD management requested the planning and design of new facilities.

Cannon's responsibility for the project included the planning and design of the plant-wide hydraulic profile calculations, yard piping layout and design, new headworks and aerated grit chamber facilities, EQ Tank and pump station (for feeding the existing UV reactors), and sludge beds. The headworks facilities includes a parshall flume for flow metering, one new bar screen with relocation of existing bar screen, a submersible wet well and submersible pump station using the Wemco Hidrostral submersible pumps. LCSD requested that we design around their existing Huber Step Screens with provisions for a larger screen.

The step screens have a 1/4-inch (6mm) bar space opening. The Headworks "skeleton/concrete" and header discharge have been master plan designed around the ultimate Phase 2 plant flows of 12 mgd while the Phase 1 peak hydraulic flows are 9.0 mgd. The

final engineered solution is to have a "necked down" channel for the existing screen with provisions to expand and a dual channel for a larger bar screen. Cannon was responsible for process flow diagram development, electrical engineering, process engineering and structural engineering on this headworks.

The new headworks included a dual channel structure with a necked down channel to accommodate the existing screen and washer compactor, a new step screen and washer compactor. In addition to the bar screen and washer compactor, the headworks included a parshall flume for influent metering, a submersible wet well pumping station utilizing the Wemco Hidrostral recessed impeller pumps and molded intakes.

The Cannon/Carollo Team completed a 100 percent design deliverable in May 2017. LCSD is proceeding through environmental documentation prior to advertising the project for construction bids. Cannon/Carollo will continue with engineering services during construction.

## Client Contact/Project Reference

Martin Wilder, PE, Utilities Manager, County of Santa Barbara

Laguna County Sanitation District, 620 West Foster Road, Santa Maria, CA 93455

☎ 805.739.8750 ✉ [mwilder@cosbpw.net](mailto:mwilder@cosbpw.net)

# BVARA Wastewater Treatment Plant Rehabilitation

Kern County, California



Cannon completed the design for the rehabilitation of the Buena Vista Aquatic Recreation Area (BVARA) wastewater treatment plant (WWTP) in Kern County (County). This project is currently in construction and will be completed by March 2017 (prior to the Easter weekend).

The wastewater treatment plant serves the camp grounds surrounding Buena Vista Lake. Wastewater from the RV campsites and restroom/shower facilities is pumped into the WWTP with lift stations and currently has no screenings equipment.

As part of the plant rehabilitation, and in an effort to minimize the solids ending up in the WWTP and effluent disposal ponds, the County requested that we provide a design for removing screenings. Following a brief screenings evaluation, Cannon completed the design of a new screening facility. The facility is a package type screenings equipment by Parkson.

The system is known as Hycor Helisieve Plus unit, and is essentially an auger type in-channel inclined screen with a perforated “basket” whereby the screening material is trapped and removed with a shaftless spiral screw auger with brush.



The inclined screenings basket consists of ¼-inch perforated holes where screenings are trapped and fluid continues through all the available holes. The entire mechanism will be manufactured of stainless steel material.

Due to the remoteness of the plant and the drastic seasonal variations in flow, the system will not include a screenings compactor. This simple screenings facility provided the County an elegant solution to their request. In addition to the bar screen addition, the project involved the replacement of 1,500 linear feet of influent force main, design of a new circular walkway, recoating of the clarifier and activated sludge tanks, and two new effluent pumps.

## Client Contact/Project Reference

Kim Domingo, City Engineer, County of Kern  
1115 Truxtun Avenue, 5th floor, Bakersfield, CA 93301  
☎ 661.868.3140 ✉ [domingok@co.kern.ca.us](mailto:domingok@co.kern.ca.us)



# Municipal Wastewater Engineer

McFarland, California



Cannon was selected to be an on-call municipal wastewater engineer for the City of McFarland (City) for a three-year term beginning in 2012; today, Cannon has been retained for an indefinite term. As the City's wastewater engineer, Cannon has completed several projects associated with the wastewater treatment plant, including irrigation pump station and pipe design, a wastewater facilities master plan, an aeration basin, blower and MCC building, and a headworks upgrade design.

The City embarked on a phased approach for converting the wastewater treatment plant from an aerated lagoon to an extended aeration activated sludge plant. The first phase of the wastewater upgrade included the design of a new headworks facility. Future work includes new clarifiers and RAS/WAS pump station, effluent pump station, and dewatering facilities (solar beds and screw press).

As part of the phased approach for re-vamping the existing plant, our proposed project team completed planning, design and construction management for the new headworks facility. The new headworks included a dual channel structure, single automated bar screen, screenings washer compactor, a wet well and submersible pump station. As a result, the headworks included a new plant SCADA system complete with 3 lift station integrations and the initial design included considerations for the master planned wastewater plant.



The headworks included an automatic bar screen with washer compactor and manual bar rack for bypass flows. The preferred screen, by the operators, was a fully automatic multi-rake bar screen. The bar rack spacing is ¼-inch opening and is manufactured by Vulcan Industries. Previously, the plant operated to "continuous link filter screens" (Aqua-Guard) which were removed. The McFarland Headworks project involved the structural, process, electrical and instrumentation engineers at Cannon.

In addition to the Bar Screen and washer compactor, the headworks included a parshall flume for influent metering, a submersible wet well pumping station using the Wemco Hidrostal recessed impeller pumps and molded intakes.

This system has been in continuous operation since May 2015.

## Client Contact/Project Reference

Mario Gonzales, Public Works Director, City of McFarland  
401 West Kern Avenue, McFarland, CA 93250  
☎ 661.7923093 ✉ [mgonzales@mcfarland.org](mailto:mgonzales@mcfarland.org)



# 2008 Wastewater Treatment Plant Expansion

Delano, California



Amando Garza served as Project Manager for the design of an 8.8 mgd expansion of the City of Delano WWTP. The expansion touched nearly every aspect of the City's facility, and included addition of a new extended aeration activated sludge process to the existing trickling filters. In addition to significant rehabilitation of the existing headworks and digesters, the project included two new oxidation ditches, three secondary clarifiers, RAS/WAS pump station, splitter structure, effluent storage ponds, sludge storage tanks, and centrifuge facility.

Prior to the expansion, the City's headworks relied on a single mechanical bar screen to remove screenings from the influent waste stream, and wet screenings were discharged directly to a storage bin. In order to improve the reliability of the City's screening facility as well as the quality of the screenings handled by plant staff, a second climber-type screen and a dedicated screening washer compactor for each screen was designed. Screenings removed from the raw wastewater will be washed and dewatered before being discharged to a dumpster for offsite disposal.

*Mr. Garza completed this project prior to joining Cannon.*



In addition to the screening facility improvements, Mr. Garza's team designed improvements to the City's grit handling facilities with the addition of a new grit screw auger, cyclone, and classifier. To increase the capacity of the existing influent pump station, additional dry pit submersible pumps were also included in the project.

Finally, to mitigate potential hydrogen sulfide corrosion issues at the headworks, the walls of the screening channels and wet well were coated with a high solids epoxy coating.

## Client Contact/Project Reference

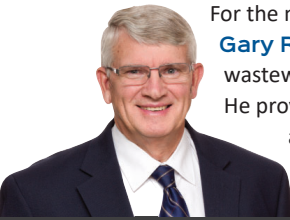
Juan Cerda, Wastewater Superintendent, City of Delano  
725 South Lexington Street, Delano, CA 93215  
☎ 661.721.3350 ✉ [jcerda@delano-ca.org](mailto:jcerda@delano-ca.org)

## Key Personnel and Organizational Chart

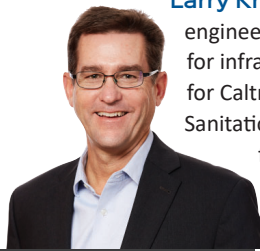


**Amando Garza, PE** has more than 26 years of professional experience with an extensive background in wastewater process engineering and a thorough knowledge of wastewater treatment plant (WWTP) planning design and construction administration as well as design of lift stations and odor control facilities.

He has managed the successful completion of many headworks design projects that have included bar screens and washer compactors upgrades. His headworks and screenings handling experience ranges in size from 0.3 mgd to 32 mgd, including a 8 mgd headworks for the City of Delano that included a complete headworks upgrade.

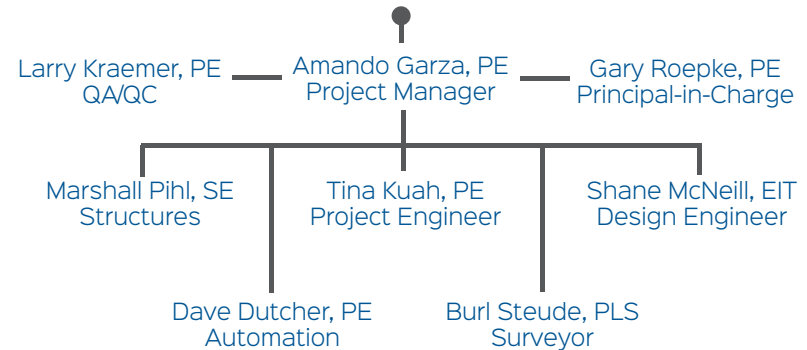


For the majority of his more than 42 years as a Civil Engineer, **Gary Roepke, PE** has designed and managed projects for wastewater and water systems across Southern California. He provides oversight on projects for wastewater collection and pumping systems; site development; supply, transmission, and distribution systems; and construction administration and inspection.



**Larry Kraemer, PE** brings 30+ years of experience in civil engineering planning, design, and construction management for infrastructure projects. He has served in various capacities for Caltrans, Orange County Water District, and Orange County Sanitation District on complex water resources systems, and for the past 10 years as Director of Cannon's Public Infrastructure Division, where he leads the Division's daily oversight of design teams, project and construction management, planning, and contract administration.

## South San Luis Obispo County Sanitation District



**Tina Kuah, PE** brings 11 years of experience in performing transient surge and hydraulic analyses for pressurized water conveyance systems including potable, recycled, raw, and sewer. She has worked with numerous agencies and municipalities throughout California, including the Los Angeles Department of Water and Power and the County/City of San Francisco Department of Public Works.



**Shane McNeill, EIT** is experienced in water resource, wastewater, transportation, and structural projects. He has provided design and construction inspection for public infrastructure projects including road repairs, drainage facilities, SWPPPs, water system improvements, and municipal structures. His experience in direct support of Resident Engineers, by inspecting and observing construction work in the field, gives him a keen eye for design.

## Quality Assurance/Quality Control Program

With your project's main objectives in mind, our Program Manager will implement Cannon's Quality Assurance/Quality Control Program. Cannon has earned a strong reputation for product delivery and professional service. We have built and continue to develop a comprehensive internal control process to provide the highest level of quality to save our clients time and money.

This process incorporates peer review and progress reporting to better meet our clients' desires for project design, costs, and schedule milestones. These processes are integral to our way of doing business, allowing us to establish and maintain schedules and budgets, develop cost saving strategies, and sustain our commitment to quality.

These processes include a **Work Product Review Program** (the most significant element of our QA/QC for the design process), Project "Look Backs" to capture and share lessons learned, Earned Value Analysis (EVA) program to manage deliverable completion and value, and Project Progress Reviews which use our project management software.

We know we have done it right when we get a set of plans back without a single redline, when a project is constructed with low number of RFIs, and when we get positive feedback from our clients.

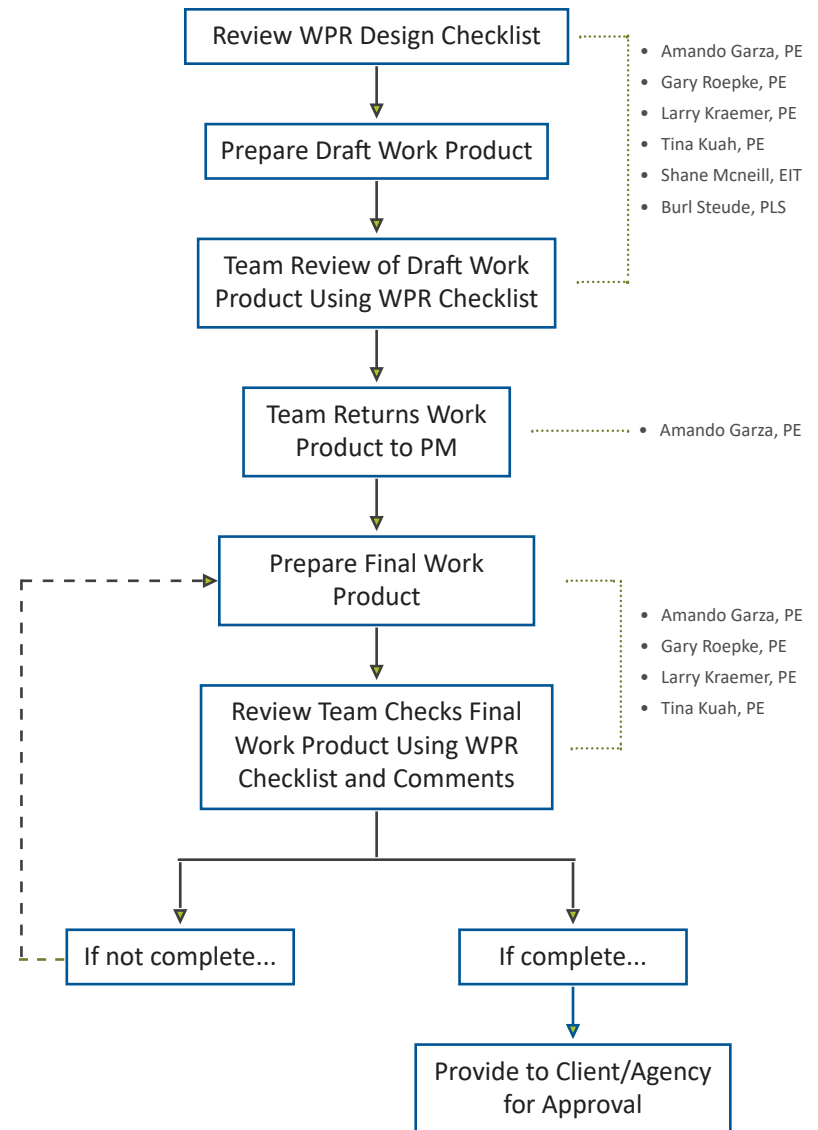
In addition, we employ cost savings strategies that have been effective in managing projects for public and private industry clients. These strategies may include: cost benefit analysis and value engineering reviews; and alternative technologies review or innovative approach analysis.

Our work flow incorporates Quality Review processes to ensure compliance with standards and that our engineering services are accurate, efficient, and fully meet our clients' expectations. We place key emphasis on "Getting it Right the First Time."

## Earned Value Analysis (EVA)

Our EVA program is a method for managing projects based on the regular comparison of actual project costs to planned costs and to completed work. The phrase "earned value" comes from the concept that when a deliverable is completed, its value has been earned. Steps of this analysis include identifying each deliverable, developing a schedule for deliverable completion, and assigning a value to each deliverable.

## Overview of Cannon's QA/QC Program



The South San Luis Obispo County Sanitation District (District) realizes the importance of predictive and preventative maintenance to extend the useful life of its facilities. Planned repair and replacement of existing infrastructure allows for well thought out and safe construction activities in contrast to performing work in an emergency repair situation. The District has prioritized several major items for the upcoming CIP projects including the Primary Clarifier No. 2 Rehabilitation and Control Box Valve Replacement Project described as follows:

1. Removal of existing Primary Clarifier No. 2 drive unit, walkway bridge, clarifier mechanism, scum sweeper, and scum hopper.
2. Provide and install manufacturer fabricated rake arms, inner, middle blades, and stainless steel squeegees.
3. Provide and install new manufacturer fabricated channel iron, scum sweeper, hopper and beaches on the scum box (all stainless)
4. Install District-furnished control box with new stainless steel fasteners and gaskets

#### *Project Goals -*

- ✓ Replace aging infrastructure and extend the useful life of Primary Clarifier No. 2; remove and replace entire mechanical mechanism, drive, walkway, scum sweeper and scum hopper.
- ✓ Specify the appropriate coating for the new mechanism for both submerged and exposed metals
- ✓ Properly install the District-furnished control box valve
- ✓ Specify the proper parts and appurtenances for a complete and successful mechanism installation by contractors.
- ✓ Develop technical specifications that require high performance of coating equipment used for on-site applications.

#### *Project Strategies -*

- ✓ Close coordination and meetings with operations and maintenance staff to fully understand the extents of desired rehabilitation and how to best phase, coordinate, and schedule work within the plant.
- ✓ Develop construction phasing to maximize use of existing isolation valving and minimize bypass pumping.
- ✓ Determine/verify extents of concrete repair, coatings, and rehabilitation, if any, while the clarifier is fully drained for demolition of mechanism.





## Key Considerations

We have evaluated the RFP, visited and walked the project site, reviewed as-built drawings, studied CSI's report, and discussed goals for the project with District staff. Based on this research, we have identified the following key elements for a successful rehabilitation project:

### 1 Coating Specialists

Knowledge and experience in the design, construction, and sequencing of the rehabilitation and upgrade of wastewater treatment systems, as well as the overall construction work are critical prerequisites for the team responsible for preparing efficient and effective project implementation documents. A detailed understanding of current Society for Protective Coating (a.k.a. SSPC, Steel Structures Painting Council) and National Association of Corrosion Engineers (NACE) requirements for the painting and coating systems are also critical to the successful execution on of this project. We will work closely with CSI to incorporate their input and feedback throughout the design development process. We have successfully worked with CSI on several recent projects.

### 2 WWTP Expertise

Many factors have the potential to affect implementation of these upgrades including seasonal flow variations; treatment process upsets; and the need to bypass around zero-redundant facilities. Our multidisciplinary team of professionals, led by Mr. Garza, has successfully worked together on numerous similar rehabilitation and upgrade projects. We will assess the challenges and nuances of the District WWTP and incorporate requirements into the design to provide clear, concise, correct, and complete construction documents.

### 3 Design Development

Understanding the District's goals and discussing them with the WWTP operations and maintenance team at the onset of the project will allow us to develop a clear vision for the project. Topics will include design life, material type, ongoing treatment plant operations, system valving and isolation, construction phasing, long-term operations and maintenance, access, budget, and schedule. Having these discussions and making decisions early in the process will help deliver the project on time and within budget.

### 4 Bid Documents

There are many different methods for securing cost numbers from prospective bidders/contractors such as lump sum, and itemized unit costs. We will work closely with District staff to incorporate lessons learned from the District's previous projects along with our unique experience on other similar projects. The goal of this effort will be to develop bid documents that are clear to bid and straightforward to administer during construction.

### Reducing Change Orders

The more thorough and clear the construction documents, the less likely the District will receive unexpected change orders. One strategy we've found helpful is to involve contractors in the process. By providing selected contractors with plans and specifications at the submittals, we can receive and incorporate review comments into the construction documents and dramatically reduce change order requests. We further refine the contract documents by soliciting feedback from the operations and maintenance staff of the District.

We have documented this process and feedback from previous projects with neighboring agencies in what we call our "Lessons Learned Memorandums." In addition, we have a documented process for tracking change orders during construction. Cannon adheres to strict document control guidelines, which we believe is a valuable practice for any project – construction related or not. When a project begins, we implement a standard file system which includes folders for correspondence, contract administration, contractor submittals, daily reports and site images, RFI's, schedule of values, substantial completion, and close out.

In addition to these standard file folders, we follow a file naming convention to ensure quick retrieval of documents. This file system is available in each Cannon office and to our Project Managers, Project Engineers, and Construction Observers working in the field. These document control guidelines prove invaluable when assisting with claims management, unresolved change orders or identifying refinements to plans and/or specifications for future projects.

Cannon will provide the engineering services for plans and specifications (P&S) for the rehabilitation of the Clarifier No. 2 mechanism. This includes the bridge walkway, scum baffle with supports and V-notch weir replacement, scum beach and piping, and Control Box Valve replacement. We will use past project information and recent and future field visits to assess the existing condition of Primary Clarifier No. 2.

Our scope for this rehabilitation project, involving bidding assistance, construction inspection and construction administration, and engineering services through construction duration are summarized as follows:

- Provide Project Management efforts throughout each phase of the project.
- Prepare the design plans and specifications for the replacement of the Clarifier No. 2 mechanism, including the following:
  - Mob/Demob/Clean-up
  - Disassemble and remove existing clarifier drive unit
  - Remove existing clarifier walkway bridge
  - Provide and install manufacturer fabricated stainless steel walkway bridge with fiberglass walkway grating and aluminum handrails
  - Remove existing clarifier channel iron, scum sweeper, and clarifier scum hopper
  - Provide and install manufacturer fabricated rake arms, inner, middle blades, and stainless-steel squeegees
  - Provide and install new manufacturer fabricated channel iron, scum sweeper, hopper and beaches on the scum box (all stainless)
  - Provide and install new drive (rated at 42,000 ft. lbs.)
  - Confirm assembly fasteners are stainless steel
  - Provide for the rebalance of the clarifier drive arms
  - Dispose of the existing, removed clarifier components
  - Provide required electrical engineering for new drive and motor units
- Provide required plumbing services for installation of the new plant PVC schedule 80 reclaim water line and sprayer along the walkway
- Start up, test and level the new drive unit
- Provide for functional testing and demonstrating by vendor representative
- Install safety SST bars in the lauder box inlet
- Remove and dispose of existing control box valve
- Install new District furnished control box valve with new stainless steel fasteners and gaskets
- Provide constructability and QA/QC review of design, quantities, and methods of measurement and payment for construction.
- Provide Engineer stamped Plans and Specifications ready to bid
- Prepare Engineer's Estimate
- Project Management Services for the project will be provided by Cannon. These efforts include a project kick-off meeting and review meetings with District staff on the design deliverable (90% and Final P&S).



### Design Phase Work -

Our services will include the following tasks:

- Prepare and stamp Final plans.
- Prepare and stamp Final specifications. The owner will provide the front end of the specifications.
- Prepare Engineer's Estimate for 90% and Final
- Provide construction phasing plan to keep system operational while work is completed.

### Bidding Phase Work -

Our services will include the following tasks:

- Review and respond to bidder RFI's.
- Attend Pre-Bid Meeting.

### Construction Phase Work -

Our services will include the following tasks:

- Attend the pre-construction meeting with District staff and construction contractor
- Review contractor submittals with one re-review for each.
- Respond to RFI's.
- Prepare project record drawing based on Contractor's red line markups.
- Provide onsite inspection services.
- Three site visits, and attendance at three contractor meetings.

### Deliverables -

We will provide the following deliverables:

- 90% Plans for District review and comment
- Final Plans
- Final Specifications
- Record drawings (based on Contractor redlines)
- Engineer's Estimate

If possible, District will provide AutoCAD drawings and plans from previous related projects to aid design and to provide anticipated level of detail.





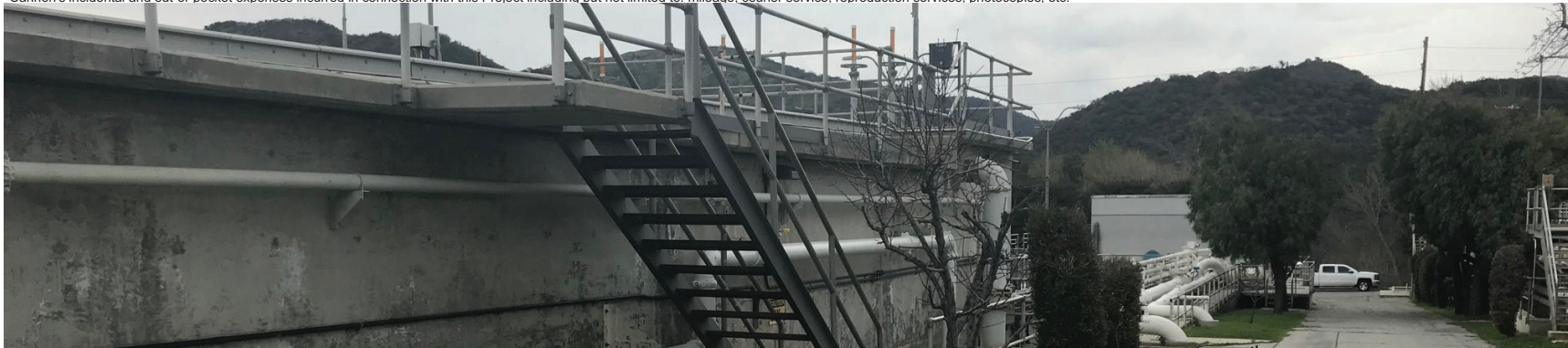
**FEE PROPOSAL FOR  
SSLOCS  
CLARIFIER NO. 2 RHABILITATION AND VALVE REPLACEMENT PROJECT  
DESIGN, Bidding AND CONSTRUCTION ADMIN., INSPECTION AND SUPPORT SERVICES**

Cannon  
1050 Southwood Drive  
San Luis Obispo, CA 93401  
805.544.7407

			Project Manager		Project Engineer		Associate Struct Engineer		Design Engineer		Admin Assistant		Construction Inspector/Admin.		Elect., I & C Engineer		Reimbursables	Total	
			\$206		\$165		\$165		\$145		\$85		\$135		\$210				
Task	Description	Hourly Rate	Hrs	Cost	Hrs	Cost	Hrs	Cost	Hrs	Cost	Hrs	Cost	Hrs	Cost	Hrs	Cost	Cost	Hrs	Cost
PHASE 1. DESIGN MODIFICATIONS																			
1	Design Plans and Specifications		8	\$1,648	30	\$4,950	16	\$2,640	20	\$2,900	1	\$85	0	\$0	16	\$3,360	\$60	91	\$15,643
2	Design Review Meeting		6	\$1,236	4	\$660	2	\$330	0	\$0	1	\$85	0	\$0	4	\$840	\$60	17	\$3,211
3	Final Construction Documents		2	\$412	8	\$1,320	1	\$165	20	\$2,900	4	\$340	0	\$0	4	\$840	\$60	39	\$6,037
Phase I Total			16	\$3,296	42	\$6,930	19	\$3,135	40	\$5,800	6	\$510	0	\$0	24	\$5,040	\$180	147	\$24,891
PHASE 2. BIDDING, CONSTRUCTION SUPPORT, AND PROJECT CLOSEOUT																			
4	Bid Support		1	\$206	16	\$2,640		\$0	2	\$290	4	\$340	3	\$405	2	\$420	\$60	28	\$4,361
5	Construction Support		2	\$412	16	\$2,640	2	\$330	2	\$290	4	\$340	40	\$5,400	4	\$840	\$300	70	\$10,552
6	Project Closeout & As-builds		1	\$206	4	\$660	2	\$330	12	\$1,740	2	\$170	2	\$270		\$0	\$60	23	\$3,436
Phase II Total			4	\$824	36	\$5,940	4	\$660	16	\$2,320	10	\$850	45	\$6,075	6	\$1,260	\$420	121	\$18,349
Totals			20	\$4,120	78	\$12,870	23	\$3,795	56	\$8,120	16	\$1,360	45	\$6,075	30	\$6,300	\$600	268	\$43,240

Reimbursables

Cannon's incidental and out-of-pocket expenses incurred in connection with this Project including but not limited to: mileage, courier service, reproduction services, photocopies, etc.





## Required Acknowledgments and Statements


## Statement of Contract Disqualifications

Neither our employees nor any of our officers with a proprietary interest have ever been disqualified, removed, or otherwise prevented from proposing on or completing a municipal government project for any reason.


## Exceptions

We take no exceptions to this RFP, including but not limited to the provisions of the District's Standard Agreement (Appendix A).

X

  
Larry R. Kraemer, PE, Secretary

## Certificate of Professional Liability

ACORD		CANNCOR-01		PATRA04		
CERTIFICATE OF LIABILITY INSURANCE				DATE (MM/DD/YYYY) 09/04/2018		
<p>THIS CERTIFICATE IS ISSUED AS A MATTER OF INFORMATION ONLY AND CONFERS NO RIGHTS UPON THE CERTIFICATE HOLDER. THIS CERTIFICATE DOES NOT AFFIRMATIVELY OR NEGATIVELY AMEND, EXTEND OR ALTER THE COVERAGE AFFORDED BY THE POLICIES BELOW. THIS CERTIFICATE OF INSURANCE DOES NOT CONSTITUTE A CONTRACT BETWEEN THE ISSUING INSURER(S), AUTHORIZED REPRESENTATIVE OR PRODUCER, AND THE CERTIFICATE HOLDER.</p> <p>IMPORTANT: If the certificate holder is an ADDITIONAL INSURED, the policy(ies) must have ADDITIONAL INSURED provisions or be endorsed. If SUBROGATION IS WAIVED, subject to the terms and conditions of the policy, certain policies may require an endorsement. A statement on this certificate does not confer rights to the certificate holder in lieu of such endorsement(s).</p>						
<p>PRODUCER License # 0305584 Morris &amp; Garritano Insurance Agency, Inc. PO Drawer 1189 San Luis Obispo, CA 93406</p>		<p>CONTACT Kristina Pottit PHONE (805) 543-6887 375 FAX (805) 543-3064 E-MAIL kpettit@morrisgarritano.com ADDRESS</p>				
INSURED		INSURER(S) AFFORDING COVERAGE		NAIC #		
Cannon Corporation 1050 Southwood Drive San Luis Obispo, CA 93401		INSURER A: American Casualty Company of Reading, Pennsylvania		20427		
		INSURER B: Transportation Insurance Company		20494		
		INSURER C: The Continental Insurance Company		35289		
		INSURER D: Hartford Fire Insurance Company		19682		
		INSURER E: Liberty Insurance Underwriters, Inc.		19917		
		INSURER F:				
COVERAGES		CERTIFICATE NUMBER:		REVISION NUMBER:		
<p>THIS IS TO CERTIFY THAT THE POLICIES OF INSURANCE LISTED BELOW HAVE BEEN ISSUED TO THE INSURED NAMED ABOVE FOR THE POLICY PERIOD INDICATED. NOTWITHSTANDING ANY REQUIREMENT, TERM OR CONDITION OF ANY CONTRACT OR OTHER DOCUMENT WITH RESPECT TO WHICH THIS CERTIFICATE MAY BE ISSUED OR MAY PERTAIN, THE INSURANCE AFFORDED BY THE POLICIES DESCRIBED HEREIN IS SUBJECT TO ALL THE TERMS, EXCLUSIONS AND CONDITIONS OF SUCH POLICIES. LIMITS SHOWN MAY HAVE BEEN REDUCED BY PAID CLAIMS.</p>						
LINE	TYPE OF INSURANCE	ADOL SUBR INSR 1990	POLICY NUMBER	POLICY EFF (MM/DD/YYYY)	POLICY EXP (MM/DD/YYYY)	LIMITS
A	<input checked="" type="checkbox"/> COMMERCIAL GENERAL LIABILITY <input type="checkbox"/> CLAIMS-MADE <input checked="" type="checkbox"/> OCCUR		2058094931	09/01/2018	09/01/2019	EACH OCCURRENCE DAMAGE TO RENTED PREMISES (See endorsement) \$ 100,000 MED EXP (Any one person) \$ 15,000 PERSONAL & ADV INJURY \$ 1,000,000 GENERAL AGGREGATE \$ 2,000,000 PRODUCTS - COM/OP AGG \$ 2,000,000
GEN'L AGGREGATE LIMIT APPLIES PER: <input type="checkbox"/> POLICY <input checked="" type="checkbox"/> PRO- JECT <input checked="" type="checkbox"/> LOC OTHER:						
B	<input checked="" type="checkbox"/> AUTOMOBILE LIABILITY <input checked="" type="checkbox"/> ANY AUTO OWNED AUTOS ONLY <input type="checkbox"/> SCHEDULED AUTOS <input type="checkbox"/> NON-OWNED AUTOS ONLY <input type="checkbox"/> HIRED AUTOS ONLY		2058094976	09/01/2018	09/01/2019	COMBINED SINGLE LIMIT (See endorsement) \$ 1,000,000 BODILY INJURY (Per person) \$ BODILY INJURY (Per accident) \$ PROPERTY DAMAGE (Per accident) \$
C	<input checked="" type="checkbox"/> UMBRELLA LIAB <input checked="" type="checkbox"/> EXCESS LIAB <input type="checkbox"/> CLAIMS-MADE DED <input checked="" type="checkbox"/> RETENTION \$ 10,000		6043414103	09/01/2018	09/01/2019	EACH OCCURRENCE \$ 9,000,000 AGGREGATE \$ 9,000,000
D	<input checked="" type="checkbox"/> WORKERS COMPENSATION AND EMPLOYERS LIABILITY ANY PROPRIETOR/PARTNER/EXECUTIVE OFFICER/OWNER EXCLUDED? (Endorsement in W/C) If yes, describe under DESCRIPTION OF OPERATIONS below	Y/N N/A	51WEAA50F4	09/01/2018	09/01/2019	<input checked="" type="checkbox"/> PER STATUTE <input type="checkbox"/> OTH- ER E.L. EACH ACCIDENT \$ 1,000,000 E.L. DISEASE - EA EMPLOYEE \$ 1,000,000 E.L. DISEASE - POLICY LIMIT \$ 1,000,000
E	Professional Liab.		AEXNYABNDIR001	06/08/2018	06/08/2019	Per Claim \$ 2,000,000
E	Claims Made		AEXNYABNDIR001	06/08/2018	06/08/2019	\$100K/SIR - Aggr. \$ 2,000,000
DESCRIPTION OF OPERATIONS / LOCATIONS / VEHICLES (ACORD 101, Additional Remarks Schedule, may be attached if more space is required) Carrier AM Best Ratings: Transportation Insurance: A XV, American Casualty Company of Reading: A XV, Liberty Insurance Underwriters: A XV, Continental Casualty: A XV, Hartford Casualty Insurance Company: A+ XV.						
CERTIFICATE HOLDER			CANCELLATION			
Information Only Purposes			<p>SHOULD ANY OF THE ABOVE DESCRIBED POLICIES BE CANCELLED BEFORE THE EXPIRATION DATE THEREOF, NOTICE WILL BE DELIVERED IN ACCORDANCE WITH THE POLICY PROVISIONS.</p> <p>AUTHORIZED REPRESENTATIVE </p>			

ACORD 25 (2016/03)

© 1988-2015 ACORD CORPORATION. All rights reserved.  
The ACORD name and logo are registered marks of ACORD

# Appendix





## Resumes

### Amando Garza, PE, BCEE Project Manager

#### Professional Registration

- Registered Civil Engineer, California, No. 54148

#### Education

- Master of Science, Civil Engineering, University of California, Los Angeles, California
- Bachelor of Science, Civil Engineering, California State University, Fresno, California

#### Professional Affiliations

- California Water Environment Association
- Water Environment Federation

Mr. Garza has served as the Lost Hills Utility District Engineer since 1998 and currently serves as the Municipal Wastewater Engineer for the City of McFarland. With 23 years of water and wastewater design and construction experience, he has completed numerous facilities plans, operations manuals, revenue programs, and recycled water/reuse projects. He also has extensive experience in design, resident engineering, construction management, grant and funding administration, and environmental compliance.

**Headwork Design and Construction Management, McFarland, California:** As Project Manager, Mr. Garza oversaw this first phase of the wastewater treatment plant's expansion. The design of the new headworks included a Parshall flume, a mechanical bar screen and manual bar screen, and submersible influent pump station. The headworks structure was designed with two parallel channels to accommodate long-term anticipated peak flows. A single mechanical bar screen and washer compactor were installed to treat a short-term design peak flow of approximately 4.0 mgd (2036). The second screenings channel was equipped with a manual bar screen, which will be used to bypass flow if the mechanical bar screen is out of service.

**Wastewater Treatment Plant and Related Improvements Expansion, Delano, California:** Mr. Garza served as Project Manager for design of the City's WWTP expansion, which took the facility from 4.0 mgd to 8.0 mgd. The expansion touched nearly every aspect of the City's facility and included the addition of a new extended aeration-activated sludge process to the existing trickling filters. This project was completed prior to Mr. Garza working with Cannon.

**Wastewater Treatment Plant Rehabilitation, Kern County, California:** Cannon completed the design for the rehabilitation of the Buena Vista Aquatic Recreation Area (BVARA) wastewater treatment plant (WWTP) in Kern County (County). As Project Manager, Mr. Garza oversaw the screenings evaluation and design of a new screening facility. The system is an auger type in-channel inclined screen with a perforated "basket" whereby the screening material is trapped and removed with a shaftless spiral screw auger with brush. The inclined screenings basket consists of ¼-inch perforated holes where screenings are trapped and fluid continues through all the available holes.

**Phase 1 Plant Upgrade, Santa Maria, California:** Mr. Garza assisted on a project to complete the planning and design efforts for the Laguna County Sanitation District (LCSD) Phase 1 wastewater treatment plant upgrade. Phase 1 plant upgrades consisted of designing a new headworks facility and activated sludge process for replacement of the existing Trickling Filter wastewater process. Cannon was responsible for process flow diagram development, electrical engineering, process engineering and structural engineering on this headworks.

**Wastewater Treatment Plant 3 Headworks Upgrade, Bakersfield, California:** Mr. Garza served as Project Manager for a major rehabilitation of the City's existing headworks. The project included replacement of the two existing mechanical bar screens with new heavy duty climber-type bar screens. A dedicated screenings washer compactor was also installed behind each screen. This project was completed prior to Mr. Garza working with Cannon.



## Gary Roepke, PE Principal-in-Charge

### Professional Registration

- Registered Civil Engineer, California, No. 48693

### Education

- Bachelor of Science, Civil Engineering, Iowa State University, Ames, Iowa

### Professional Affiliations

- American Water Works Association (AWWA)
- American Public Works Association (APWA)
- Association of Water Agencies of Ventura County (AWA)
- Southern California Water Utilities Association (SCWUA)

Mr. Roepke brings more than 40 years of experience in engineering and design for water resources. He has been the project manager for municipal, industrial, commercial, and military facility projects involving wastewater collection and pumping systems; water treatment, water supply, transmission, and distribution systems; drainage and flood control systems; and recycled water systems. In addition, Mr. Roepke provides construction administration, inspection, and start-up services such as master planning, preparation of reports, and studies for both new construction and upgrades to existing facilities.

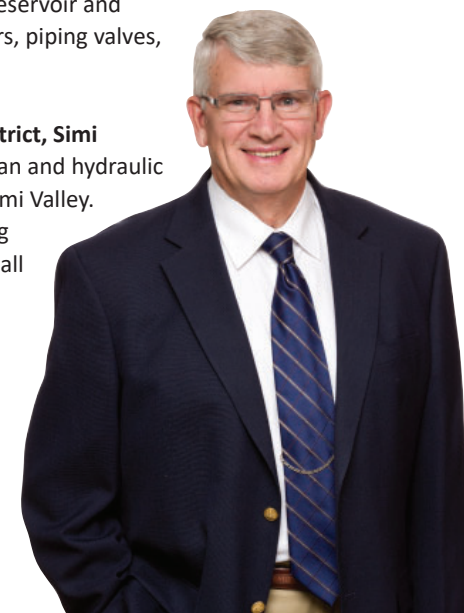
**5.0-MG Reservoir, Ventura County Waterworks District No. 8, City of Simi Valley, California:** Mr. Roepke served as Project Manager and Lead Engineer for the establishment of a 5.0-MG reservoir, including grading, drainage, access road, inlet/outlet line, electrical, and controls.

**Q Street Sewer Rehabilitation, City of Bakersfield, California:** Mr. Roepke served as Project Manager and Lead Engineer for the assessment of the 33-inch Q Street trunk sewer. Services included coordinating all field efforts for the cleaning and video logging of the line condition, preparation of report of findings and recommended remedies, preparation of a repair report, and outlining of additional items for consideration, including an FOG reduction plan for the line. Following CCTV inspection, assessment, and recommendations for rehabilitation, a PS&E was prepared for construction of a cured-in-place-pipe (CIPP) liner for approximately 3,850 linear feet of existing 33-inch RCP sewer. Design services included preparation of sewer rehabilitation specifications, traffic control plans, a sewage bypass system, and procurement of Caltrans encroachment permit for trenching bypass piping.

**Reagan Presidential Library 1.5-MG Reservoir, Ventura County Waterworks District No. 6, City of Simi Valley, California:** Mr. Roepke served as Project Manager and Lead Engineer for the establishment of a 1.5-MG reservoir and upgrade to the Presidential Library booster pump station, including new pumps and motors, piping valves, electrical, and controls.

**Water System Master Plan, Big Sky Ranch (2,680 acres), Ventura County Waterworks District, Simi Valley, California:** Mr. Roepke provided Project Management for a water system master plan and hydraulic modeling completed for the 730-unit residential development in the western portion of Simi Valley. The master plan included determining the zone boundaries for three pressure zones; sizing the tanks, pump stations, and water mains for all zones; and determining the pressure for all flow conditions, including fire flow, for each lot.

**EPA Funded Discharge Lagoon Project, Hospers, Iowa:** Mr. Roepke served as Project Manager and Lead Engineer for the modification of an existing two-cell lagoon system to a three-cell controlled discharge lagoon system, with two continuous discharge aeration cells added upstream from the final three holding cells. A subsequent project added an anaerobic lagoon with a methane gas collecting cover. The anaerobic lagoon was established to treat the wastewater from a cattle slaughter and packing facility with the final effluent of this anaerobic lagoon going to the aeration cells. The project included a sanitary sewer and lift station with emergency generator and force main.



## Larry Kraemer, PE QA/QC

### Professional Registration

- Registered Civil Engineer, California, No. 44813

### Education

- Master of Science, Civil Engineering, Water Resources, California State University, Long Beach, California
- Bachelor of Science, Agricultural Engineering, California Polytechnic State University, San Luis Obispo, California
- Certified Master Modeler in Haestad Methods, WaterCad, StormCad, Pondpack software

### Professional Affiliations

- American Waterworks Association
- American Public Works Association
- Water Environment Federation
- California Water Environment Association
- WaterReuse

Since 1986, Mr. Kraemer has developed extensive civil and environmental engineering experience within the public sector. He has served as a senior engineer for complex engineering projects dealing with wastewater and water resources. As Director of Cannon's Public Infrastructure division, his duties and responsibilities include the technical oversight of design, construction, and master planning projects, construction contract administration and management for bridges, pipelines, dams, wells, and pump stations. Mr. Kraemer is adept at managing challenging or complex projects due to his astute troubleshooting skills, keen attention to detail, and innovative approach for efficient design.

**Wastewater Treatment Plant Upgrade, Guadalupe, California:** Cannon provided construction management services for the City of Guadalupe's Wastewater Treatment Plant (WWTP) upgrade, which included upgrading the headworks and replacing key machinery. The \$4.75 million project was designed to bring the WWTP into compliance with the RWQCB permit; prepare the City for future upgrades, such as meeting the criteria of Title 22 water re-use and recycling; and make operation and maintenance easier. Mr. Kraemer served as Principal Construction Manager.

**Sludge Drying Beds, Santa Maria, California:** Cannon assisted Laguna County Sanitation District with the replacement of the existing earthen (unlined and bermed) sludge drying beds as identified in the Wastewater Reclamation Plant Facilities and Financial Master Plan, 2010. The existing beds were at or near capacity and did not meet the District's goal of alleviating potential impacts to groundwater quality. The unlined beds were converted to lined beds with an appropriate return system for the bed supernatant. Mr. Kraemer served as Principal-in-Charge.

**District Engineer, Santa Ynez Community Services District, Santa Ynez, California:** Since 2004, Cannon has been the District Engineer for the Santa Ynez Community Services District. Mr. Kraemer has served as the Project Manager and main contact for the contract. As such, he has provided engineering planning, design, and oversight of the day-to-day technical issues that occur as part of operating a wastewater treatment plant and collection system. Additionally, Mr. Kraemer has participated in administrative details including budgeting and cost sharing, as well as coordination with the City of Solvang, the Chumash tribe, and residents of Santa Ynez.

**Facility Management, Fountain Valley, California:** As Senior Engineer for the Orange County Sanitation District, Mr. Kraemer provided technical oversight during development of the District's Master Plan and Capital Improvement Program. Mr. Kraemer participated in reviewing numerous facility upgrades, including an 80-MGD expansion of Air Activated Sludge plant, \$15 million Solid Storage Facility expansion, and the master planning of a \$250 million Groundwater Replenishment System designed to reclaim and reuse approximately 100 MGD of highly treated wastewater.



## Tina Kuah, PE Project Engineer

### Professional Registration

- Registered Civil Engineer, California, No. 70876

### Education

- Bachelor of Science, Civil Engineering, University of California, Los Angeles, California

### Professional Affiliations

- American Society of Civil Engineers
- American Water Works Association

As a Senior project engineer specializing in transient surge and hydraulic analyses for pressurized water conveyance systems, Ms. Kuah will work as part of the design team to apply her singular insight to the development of project designs and specifications. Her responsibilities include drawing review and tasks using standard engineering techniques, procedures, and criteria as well as tasks designed to develop advanced professional knowledge. She will independently evaluate, select, and apply judgment when making minor design adaptations and modifications.

**West Simi Valley Water Recycling Project - Recycled Water Pump Station Upgrades, Simi Valley, California:** The Ventura County Waterworks District No. 8 (District) was expanding its recycled water system to provide water to the Wood Ranch and Sunset Hill Country Clubs. We were selected to provide engineering and design services on the project, including hydraulic modeling for the upgrades. The capacity of the pump station was increased, and the upgraded pump station now pumps recycled water to a new 1.25 MG reservoir (high-water elevation of 1,035 feet above sea level) located on City-owned property near Westranch Place. The pump station design also included an emergency connection to the potable water system with an airgap between the systems. Each pump was equipped to be variable frequency drive (VFD) controlled. Ms. Kuah prepared a hydraulic model of this proposed recycled water system with Innovyze's H2ONET software. This consisted of inputting the new upgraded pump station; existing and future junctions and pipes; system demands; material type of the pipelines; new reservoir; and other pertinent appurtenances. A hydraulic (i.e. steady state) analysis was computed to verify that the system would run according to plan.

**Ritter Ranch Development Pump Stations, Los Angeles County Waterworks District, Palmdale, California:** Ms. Kuah performed the surge analysis on several pump stations (PS) and wells within the 2555, 2914, 2911, and 3240 Pressure Zones designed to serve the Ritter Ranch Development. The pump stations and wells that were part of the analysis were the Ave. H and 62nd St. W PS, Ave. I and 87th St. PS, Ave. L-12 and 60th St. W PS, Ave. O-12 and 25th St. W PS, ELR/25 W PS, 3380 PS, and future well fields. It was determined that surge protection in the form of surge tanks and vacuum relief valves was needed to protect the zones from adverse pressure surges created by the operation of the pump stations and wells.

**Glorietta Park Pump Station, Glendale Water and Power, California:** The City of Glendale Water and Power's Glorietta Park Pump Station serves drinking water to the Glorietta Park and Verdugo Woodlands areas (1666 pressure zone) of Glendale. The system experienced occasional loss of pressure at a customer's home in addition to pipeline breaks in parts of the system constructed of cast iron pipe when the Glorietta Park Pump Station was in operation.

Ms. Kuah performed a pressure surge analysis to determine if pressure surges created by the pump station were the cause of the low pressure and pipeline breaks. An existing surge tank is installed at the Glorietta Park Pump Station. Several surge protection options were provided including installing additional surge tanks, a standpipe, vacuum relief valves, and a reservoir. In addition, pressure monitors were installed throughout the system to obtain detailed information about the actual pressure surges in the system.



## Shane McNeill, PE Design Engineer

### Professional Registration

- Registered Civil Engineer-in-Training, California, No. 158818

### Education

- Bachelor of Science, Civil Engineering, California State University, San Luis Obispo, California

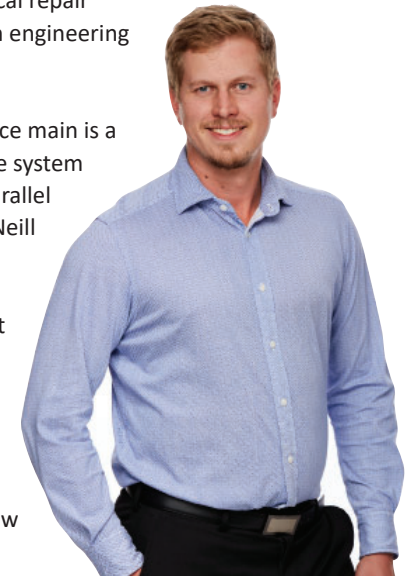
Mr. McNeill is an office and design engineer and construction inspector experienced in transportation, structural, and water resource projects. He has provided design and construction inspection for public infrastructure projects including road repairs, drainage facilities, SWPPPs, water system improvements, and municipal structures. He directly supports the Resident Engineer by inspecting and observing construction work in the field, completing weekly reports, and reviewing submittals, schedules, RFIs, pay applications, and change orders.

**CVWD Well 16 Facility, La Crescenta, California:** Glendale Water and Power (GWP) drilled a groundwater well at the old Rockhaven Sanitarium. The well construction report showed that the well could produce but the water quality for this well showed high nitrate levels, typical of the Verdugo Basin. Crescenta Valley Water District (CVWD) submitted and was awarded a grant to the Greater Los Angeles County (GLAC) Region of the Integrated Regional Water Management (IRWM) Group for Proposition 84 Drought Relief for the installation of the pump, motor, and piping at the Rockhaven Well. CVWD selected Cannon to provide professional engineering and design services, and to prepare construction bidding documents for the installation of the necessary facilities for the Rockhaven Well, now named Well No. 16. Mr. McNeill served as Design Engineer for this project.

**FY 2016/17 Sewer System Replacement Project #7512, Norwalk, California:** The City selected Cannon in 2016 to provide engineering services that initially included review and evaluation of eight damaged sewer locations within the City. Cannon's scope of services included review and evaluation of sewer locations using both closed-circuit television (CCTV) summary information and videos to assess the condition of locations. Cannon used National Association of Sewer Service Companies (NASSCO) Pipeline Assessment Certification Program (PACP) guidelines for evaluating the condition of each sewer reach, formulating rehabilitation methods for each location; preparing appropriate repair or rehabilitation recommendation methods, and providing preliminary construction costs. Additionally, we provided support with bid documentation for several critical repair locations, survey services, and utility research for additional sites. Mr. McNeill provided design engineering services for this project.

**Seaside Force Main Project, Ventura, California 170505:** The Seaside Transfer Station (STS) force main is a high-risk facility for the City of Ventura (City). Repairing or replacing the at-risk elements of the system was a high priority for the City. Cannon was selected to complete the design for the second parallel force main, so that a dual force main system will be in place for operational flexibility. Mr. McNeill served as Design Engineer for this project.

**CSA 23 Emergency Intertie Project, Santa Margarita, California:** Cannon was selected to assist the County by conducting utility research and base mapping; providing hydraulic analysis of pipeline and pump sizing based on varying conditions; preparing a design plan package (preliminary and final); and providing specifications, construction cost estimate, contract bidding assistance, and construction support services. Construction support included responding to RFIs, reviewing submittals and pothole information, and supporting the Construction Management team. Mr. McNeill provided submittal review and pothole log review for engineering design changes post-bid.





## Marshall Pihl, SE Structures

### Professional Registration

- Structural Engineer, California, No. S5101
- Civil Engineer, California, No. C61406

### Education

- Bachelor of Engineering Science, Pacific Lutheran University, Tacoma, Washington
- Bachelor of Science, Civil Engineering, Columbia University, New York
- Master of Science Civil Engineering (Structural), Columbia University, New York

### Professional Affiliations

- Professional Member, International Code Council

Mr. Pihl has been providing structural engineering services since 1984. He is knowledgeable in design and analysis for all types of new construction, renovations, and repair of structural damage due to water, rot, fire, and natural disaster. His experience includes design and analysis of wood, concrete, masonry, and steel structures. In addition to structural design and analysis, he has been involved in a number of projects as a structural engineering expert witness and consultant concerning various insurance claims and repairs.

**Solvang WWTP, Solvang, California:** Cannon provided upgrades and improvements to the existing wastewater treatment plant. The improvements included a cover over the headworks equipment and drying beds and construction of a new maintenance storage building with retaining walls integrated into the foundations. Mr. Pihl provided structural design services and coordinated with the maintenance storage building manufacturer.

**McFarland WWTP, McFarland, California:** Cannon has provided the design of major upgrades to the wastewater plant. Improvements included a new master plan, SCADA systems, clarifiers, blowers, dewatering systems, headworks, and an MCC building. Mr. Pihl provided structural design services related to the structural components of the project.

**San Ardo Central Treatment Complex, San Ardo, California:** As part of a design team, Cannon provided assistance in the development of a new facility comprising oil dehydration, gas sweetening, steam generation, vapor recovery, and oil storage plants. Cannon's site development services have included assistance in the preliminary design phase, including topographic surveying, record boundary mapping, facility layout, and earthwork balancing design. In detailed design and permitting phases, Cannon was responsible for detailed grading and drainage construction plans, site accessibility design, as well as agency compliance support which included a flood plain and drainage study, and regulatory exhibits.

The scope of services also included civil and structural detailed design as part of a complex ground infiltration system for water plant discharge. In addition to design services, Cannon provided ongoing site preparation efforts through project team coordination, exhibits, and survey staking. As Structural Engineer of Record, Mr. Pihl designed some structural components and reviewed the structural design work of staff engineers.

**Earthquake Assessment Report for Pismo Water Tanks, Pismo Beach, California:** The City of Pismo Beach selected Cannon to provide structural services related to seven City-owned and -maintained water tanks. The tanks varied in capacity from ½ to 1 million gallons. The purpose of this project was to assess the tanks as part of an earthquake preparedness program. Scope of work included review of inspection reports, site visits, seismic analysis, and an earthquake assessment report. Mr. Pihl provided project oversight and structural analysis.





## Dave Dutcher, PE Automation

### Professional Registration

- Control Systems Engineer, Oregon, 78629PE

### Education

- Bachelor of Science, Engineering Science, U.S. Air Force Academy, Colorado Springs, Colorado

### Professional Affiliations

- PLC Software: Allen-Bradley ControlLogix, Siemens S7, and Modicon Quantum
- HMI Software: Wonderware System Platform InTouch, FactoryTalk View ME/SE, Siemens WinCC
- Fieldbus Applications: Profibus, DeviceNet, ControlNet, and Modbus

Since 2001, Mr. Dutcher has built extensive experience in designing and commissioning complex control systems for public agencies and private industries. His experience has provided clients with innovative solutions to automated processes while striving for efficiency at all levels – from design to build to operations and ongoing maintenance/support. Mr. Dutcher has worked on projects ranging from multi-million-dollar “green-field” installations to small facility SCADA upgrades and retrofits. He has a passion for delivering elegant control system solutions that “make life easier” for clients.

**Las Vegas Street Wastewater Treatment Plant, Colorado Springs, Colorado:** Mr. Dutcher was responsible for a control system and SCADA software design and implementation of an upgrade to a 40-MGD plant headworks facility. He implemented a control system upgrade for the headworks controllers, including all integration, testing, and start-up requirements. Mr. Dutcher completed retrofit programming on existing Allen-Bradley PLCs while maintaining existing operations. He delivered a successful start-up with excellent client feedback. The project was completed under budget, exceeding margin expectations.

**Wastewater Treatment Facility Upgrades, McFarland, California:** Cannon was selected to be an on-call municipal wastewater engineer for the City of McFarland for a three-year term. While under this contract, Cannon was tasked with the development of wastewater facilities integration and SCADA programming for both the wastewater plant and three collection system lift stations. Beginning with the headworks construction, Cannon developed the backbone system for the ultimate wastewater facility’s phased expansion. Mr. Dutcher provided Automation services.

**LCSD Wastewater Reclamation Plant Upgrade, Santa Maria, California:** Due to aging infrastructure, anticipated growth, and a desire for greater effluent disposal flexibility, the Laguna County Sanitation District (LCSD) embarked on a two-phase program to upgrade and expand its WWRP. In partnership with Carollo Engineers, Cannon was selected to provide the planning and design efforts for the (LCSD) Phase 1 wastewater treatment plant upgrade. Phase 1 plant upgrades consisted of designing a new headworks facility and activated sludge process for replacement of the existing Trickling Filter wastewater process. Mr. Dutcher provided Automation services.

**CCWRD Solids Dewatering Facility, Las Vegas, Nevada:** Mr. Dutcher led the control system design and implementation for a new \$118 million solids dewatering facility. He integrated a new control system with the existing plant SCADA system. He produced P&IDs, specifications, and all detailed design drawings; authored control strategies for all dewatering systems; developed test procedures for system testing; and coordinated with the general contractor to complete installation and start-up of the facility. This facility is now one of the largest centrifuge dewatering facilities in the Western United States. Mr. Dutcher completed the testing, start-up, and performance testing on schedule and within budget. CCWRD Operations staff was pleased with the operation and control of the new solids building.



## Burl V. Steude, PLS Survey Project Manager

### Professional Registration

- Licensed Land Surveyor, California, No. 9103

### Education

- 40-Hour HAZWOPER Certified
- Project Management Seminar, CE Course, Cannon, San Luis Obispo, California
- CORS Applications & Utilization Seminar, California Land Surveyors Association, Long Beach, California
- Leica, GPS Surveying, Basic Course, Santa Maria, California
- Land Description Systems, CE Course, Land Surveyors Workshops, Los Angeles, California
- CPR Certified

### Professional Affiliations

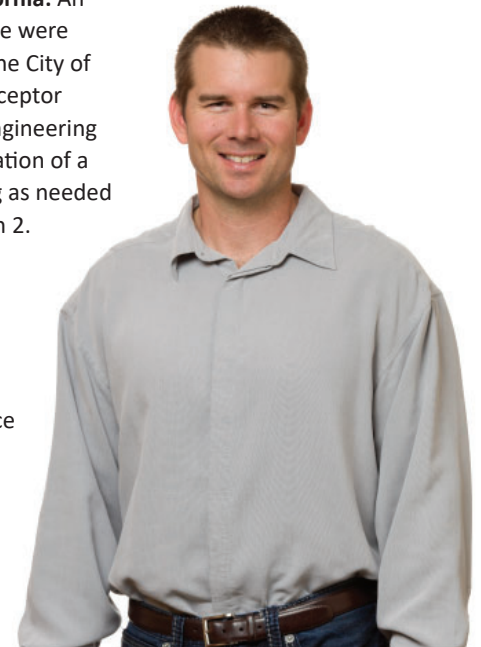
- California Land Surveyors Association

As a Project Surveyor Mr. Steude is responsible for field and office survey services as well as oversight and management of field crews. He takes measurements, interprets survey calculations, compiles evidence for boundary determinations, prepares legal land documents and descriptions, provides mapping and drafting services, and more. In addition, he plans and conducts work requiring independent judgment/evaluation, and is skilled with the use of the latest survey technologies (such as manual and robotic total stations, digital levels, static, RTK, network GPS, and 3D laser scanners). **Dana Adobe Restoration Project, Nipomo, California:** In an effort to continue San Luis Obispo County's Dana Adobe conservation, Cannon provided 3-D digital scanning services to aid in the preservation. Cannon digitally captured and preserved current conditions and dimensions of this historic landmark. This 3-D information generated from these scans was used by design professionals in modeling and analyzing the site before its restructuring and aided in the renovation. Mr. Steude served as Project Manager.

**Tank Farm Road Sewer Project, San Luis Obispo, California:** The team of Brown and Caldwell and Cannon was selected by the City of San Luis Obispo to assist with the professional consulting services required for the Tank Farm Road Sewer Project. This project included the abandonment of three existing sewer lift stations and the construction of a new regional lift station and new sewer mains connecting to it. The approximate lengths of new sewer main included 6,750 linear feet of 16-inch, 250 linear feet of 12-inch, 4,000 linear feet of 10-inch, and 1,000 linear feet of 8-inch gravity sewer mains, and 4,000 linear feet of 16-inch sewer force main. Mr. Steude was responsible for the topographic surveying and mapping, boundary surveying and mapping, utility research and coordination, base mapping, legal descriptions, and exhibits.

**Templeton Interceptor Line Lift Station No. 2 and Sewer Reach 2 & 4, Paso Robles, California:** An existing lift station and sewer main reaches were running at or near capacity and therefore were limiting the efficiency and ultimate build-out service of the Templeton Interceptor Line. The City of Paso Robles decided to upgrade Lift Station No. 2 and Reach 2 & 4 of the Templeton Interceptor Line to increase the flow capacities. Cannon was retained to provide the surveying and engineering design services for the project. Mr. Steude was the Party Chief responsible for the preparation of a topographic survey and aerial topographic surveying, with supplemental design surveying as needed to define the existing surface features and as-built conditions for the lift station and Reach 2.

**Nacimiento Water Pipeline Project (NWP), County of San Luis Obispo, California:** The NWP was developed to help supplement current groundwater supplies with the goal of supplying up to 16,200 acre-feet per year for San Luis Obispo County communities. This project entailed construction of more than 45 miles of pipeline and approximately 100 square acres for 10 different water-handling facility sites to provide another reliable source of water for San Luis Obispo County communities. Mr. Steude was a member of Cannon's Project Team for the NWP and was on the field survey crew for obtaining accurate and detailed topographic and cadastral information along the proposed pipeline route and water-handling sites to provide background information for design. Mr. Steude was part of the field team and supervised construction staking for a portion of this project.





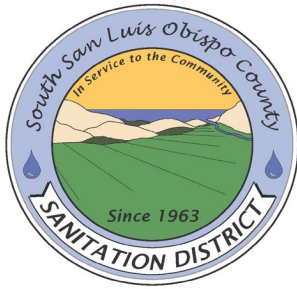


# Reliable Responsive Solutions

**Cannon**

1050 Southwood Drive  
San Luis Obispo, CA 93401  
805.544.7407

This page left intentionally blank.



## **SOUTH SAN LUIS OBISPO COUNTY SANITATION DISTRICT**

Post Office Box 339 Oceano, California 93475-0339  
1600 Aloha Oceano, California 93445-9735  
Telephone (805) 489-6666 FAX (805) 489-2765  
[www.sslocsd.org](http://www.sslocsd.org)

---

### **STAFF REPORT**

**Date:** August 7, 2019  
**To:** Board of Directors  
**From:** Jeremy Ghent, District Administrator; Mychal Jones, Plant Superintendent  
**Subject:** **DISTRICT ADMINISTRATOR AND PLANT OPERATIONS REPORT**

This report represents ongoing information on the latest District staff activities on major capital projects and studies, programmatic initiatives, regional collaboration, miscellaneous activities, and Plant Operations. *Updates since the last report are provided in italics below:*

#### **Capital Projects:**

##### **Redundancy Project:**

- District and MKN have begun soliciting statements of qualifications for Construction Management Services. Proposals are due 8/14/19
- District and MKN are submitting a funding application to iBank
- Work continues on USDA funding review and application.

##### **Misc:**

The District will be participating in a round table with Five Cities Fire Authority to develop coordinated responses during a PG&E Public Safety Power Shut Down. The California Public Utilities Commission has directed all electric utilities to investigate the impacts of an extended power shutdown. Recent wildfire events have exposed opportunities for better coordination.

##### **Plant Tours:**

1. *None*

##### **Upcoming Items:**

*District Goals and Priorities*

## Plant Operations Report

During this reporting period (July 11<sup>th</sup> – July 31<sup>st</sup>) the District's facility met its Permit Limitations as required under the State of California's National Pollutant Discharge Elimination System (NPDES) Permit issued to the District.

### Monthly Plant Data as of July 31, 2019

July 2019	INF Flow MGD	INF Peak Flow MGD	INF BOD mg/L	EFF BOD mg/L	BOD % Removal	INF TSS mg/L	EFF TSS mg/L	TSS % Removal	Fecal Coliform MPN/10 0mL	Chlorine Usage lbs/day
Low	2.6	3.5	501	19.2		538	24		<1.8	188
High	2.89	4.6	652	32		842	40.8		700	313
Average	2.71	3.95	564	26.2	95.4	648	32.3	95	81	228
July 2018 AVG	2.5	3.8	413	24.4	94.1	426	33.3	92.2	706	224
Limit	5.0			40/60/90			40/60/90	>80	2000	

\*Limit – 40/60/90 represent NPDES Permit limits for the monthly average, weekly average, and instantaneous maximum value for plant effluent Biochemical Oxygen Demand and Total Suspended Solids.

### Operation and Maintenance Projects

- Changed chemical probes' caps and electrolyte fluid
- Calibrated chemical probes
- Repaired camlock fitting on chemical tank fill line
- Work on sodium hypochlorite and sodium bisulfite backup systems and ensure proper operation
- Chlorine Contact Tank
  - Drain and rinse down east chlorine contact tank channels
  - Performed confined space entry to replace shaft bolt on drain valve
- Well Water System
  - Repair well water tank probes
  - Installed new well pump controller
- Surface Pumps, Inc.
  - Installed repaired influent pump No. 2 and seal
- Thoma Electric
  - Installed new on/off switch at secondary clarifier bug box
  - Troubleshoot electrical issues at flare drain valve actuator
  - Wired new flare drain valve actuator
- Calibrated chlorination and de-chlorination probes
- Repaired strainer basket in headworks
- Troubleshoot centrifuge torque and vibration issues
- Repaired influent pump No. 3 pressure regulator
- Assisted landscapers with cleanup of tree trimmings
- Performed a confined space entry to install new flare drain valve and actuator
- Installed steps on old centrifuge structure

**Work Orders Completed**

- Inspect digester vacuum/pressure relief valves
- Clean strainer baskets throughout treatment plant
- Wash down all clarifier surfaces
- De-ragged both primary sludge pumps
- Test ran emergency generator and emergency bypass pump
- Performed monthly maintenance on plant carts
- Inspected all clarifier drive units and sent oil samples for inspection
- Completed monthly safety walk
- San Luis Powerhouse performed annual load testing on emergency generator
- Serviced building fans
- Serviced fixed film reactor exhaust fans

**Training**

- Operations staff participated in training on the District's Spill Prevention Control & Countermeasures

**Call Outs**

- No call outs this reporting period